



# **REFERENCE MENU**

## **2019-2022**

## REFERENCE MENU 2019-2022

15BBL 4 VESSELS---03-USA	20BBL 2 VESSELS---18-IT	Kombucha --- 33-PF
30 HL 4 VESSELS---04-SG	15BBL 3 VESSELS---19-SI	Cellar Tank --- 34-34
30 HL 3 VESSELS---05-UK	10BBL 2 VESSELS---20-USA	
24 HL 3 VESSELS---06-AU	10BBL 2 VESSELS---21-USA	
24 HL 4 VESSELS---07-AU	10BBL 2 VESSELS---22-AU	
20 HL 3 VESSELS---08-GR	7 BBL 3 VESSELS---23-USA	
13 HL 2 VESSELS---09-UK	5 BBL 2 VESSELS---24-CHN	
12 HL 3 VESSELS---10-AU	5 BBL 2 VESSELS---25-USA	
10 HL 2 VESSELS---11-CHN	5 HL 2 VESSELS---26-IRL	
10 HL 3 VESSELS---12-IT	5 HL 2 VESSELS---27-UK	
10 HL 2 VESSELS---13-FR	5 HL 2 VESSELS---28-JP	
10 HL 2 VESSELS---14-ZL	4 HL 3 VESSELS---29-UK	
7 HL 2 VESSELS---15-NL	3.5BBL 2VESSELS---30-USA	
6 HL 2 VESSELS---16-AU	2 BBL 2 VESSELS---31-SE	
5 HL 2 VESSELS---17-SA	1 BBL 2 VESSELS---32-TH	

## 15BBL 4 Vessels Steam Brewing System

Area: 78m<sup>2</sup>  
15000mm\*5200mm\*10000mm

### ➤ Brewhouse Control

- HLT temperature auto control
- MT & KT temperature auto control
- **Water mixing station for setting temperature and measuring filling volume for MT water filling & sparge water filling**
- Tank lights ON/OFF
- Pumps anti-slip protection
- Mash pump, wort pump, HL pump, RO pump ON/OFF
- VFD control for all pumps (variable speed drive)
- **Material auto flow**
- Motor for rake ON/OFF
- **Spent Drain Auto Discharge**
- **Auto Fill CO2 in brewhouse tanks**
- VFD control for rake speed (variable speed drive)
- Digital display temperature in MT,LT,BK and WT
- Digital display temperature of hot water & wort back of Heat Exchanger
- Alarm buzzer function

### ➤ Delivery time:

- Production time: 90 working days
- Shipping time: 30-32 days
- Shipping date: 2018.11
- Arrival date: 2019.01

### ➤ Case Showing

- Brewery X Brewing Co.

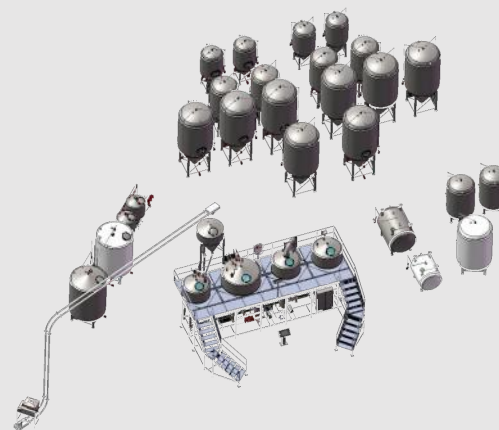
### ➤ Location

- CA, USA



### ➤ Cellar Control

- Digital display temperature in cellar tanks
- Temperature auto control in CWT,GWT
- **Five stage temperature auto control in fermenters (Five stage for temperature rise & keeping for different beer)**
- **Condition be monitored on customers iPhone**
- Alarm buzzer function



Screw Conveyor System



Use for Auto screw conveyor  
for Brewhouse malt

Air Cylinder System



Use for raking systems  
automatic control of up and down

Spent Grain System



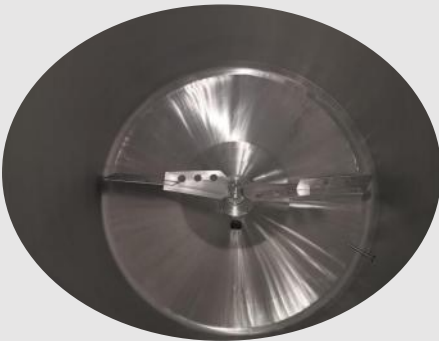
Use for 300mm auto spent grain  
door with motor control

Automated Steam control



High safety & reliability  
steam pipelines

Mash Paddle



Use for mixing grain and water  
in mashing process

Tube Heating Exchanger



Use for rapid cooling for  
brewing sour beer and wort

Air Filter



Use for air filtration in wort  
oxygenation

Remote Control System



Use for condition be monitored  
on customers iPhone/computer



## 30HL 4 Vessels Steam Brewing System

### ➤ Brewhouse Control

- HLT temperature auto control
- MT & KT temperature auto control
- **Water mixing station for setting temperature and measuring filling volume for MT water filling & sparge water filling**
- **Tank lights ON/OFF**
- Pumps anti-slip protection
- Mash pump, wort pump, HL pump, RO pump ON/OFF
- VFD control for all pumps (variable speed drive)
- Material auto flow
- Motor for rake ON/OFF
- **Spent Drain Auto Discharge**
- **Auto Fill CO2 in brewhouse tanks**
- VFD control for rake speed (variable speed drive)
- Digital display temperature in MT,LT,BK and WT
- Digital display temperature of hot water & wort back of Heat Exchanger
- Alarm buzzer function

### ➤ Delivery time:

- Production time: 95 working days
- Shipping time: 20-25 days
- Shipping date: 2020.08
- Arrival date: 2020.10

### ➤ Case Showing

- Brewlander Brewing Co.

### ➤ Location

- Singapore

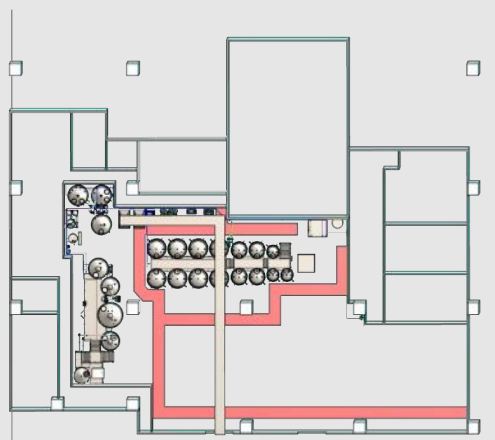


### ➤ Cellar Control

- Digital display temperature in cellar tanks
- Temperature auto control in CWT,GWT
- **Five stage temperature auto control in fermenters (Five stage for temperature rise & keeping for different beer)**
- **Condition be monitored on customers iPhone**
- Alarm buzzer function

Area: 130m<sup>2</sup>

26000mm\*5000mm\*7000mm



Screw Conveyor System



Use for Auto screw conveyor  
for Brewhouse malt

Air Cylinder System



Use for raking systems  
automatic control of up and down

Spent Grain System



Use for 300mm auto spent grain  
door with motor control

Tube Heating Exchanger



Use for rapid cooling for  
brewing sour beer and wort

Condensate Tank System



Use For collection and recovery  
of steam condensate

Brew Sink



Use for wort sampling and  
cooling

Skid CIP System



Use for Automatic CIP  
Cleaning for Brewhouse

Touch Screen for Brewhouse



Use for condition be monitored  
on customer iPhone/computer

## 30HL 3 Vessels Steam Brewing System

Area: 30m<sup>2</sup>  
6500mm\*4500mm\*6000mm

### ➤ Brewhouse Control

- MMLT & KT temperature auto control
- Water mixing station for setting temperature and measuring filling volume for MT water filling & sparge water filling
- Tank lights ON/OFF
- Pumps anti-slip protection
- VFD control for all pumps (variable speed drive)
- Material auto flow
- Motor for rake ON/OFF
- VFD control for rake speed (variable speed drive)
- Wort quick cooling down before whirlpool
- Digital display temperature on control panel
- Digital display temp of hot water & wort back of Heat Exchanger
- **Remote Access & programming online updating**
- **Recipes recording and automated steps brewing**
- Alarm buzzer function

### ➤ Cellar Control

- HLT & CLT temp controlled on BH HMI
- HLT & CLT level displayed on BH HMI
- HLT & CLT auto feeding based on setting
- **HLT & CLT auto supplying-Pressure detection**
- Alarm buzzer function



### ➤ Delivery time:

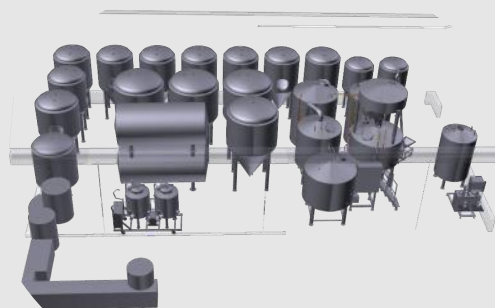
- Production time: 75 working days
- Shipping time: 30-32 days
- Shipping date: 2021.11
- Arrival date: 2021.12

### ➤ Case Showing

- Attic Brewing Co.

### ➤ Location

- Birmingham, UK



### ➤ Production Quantity: 6

### ➤ Buyer Location: UK, USA, CA



Milled False Bottom



Better filtration performance

Water Mixing Station



Automatically adjust strike water temp & qty

Water Supply System



Use for HLT / CLT auto supplying during water consumption

Centrifugal Pump



VFD control for all pumps in Brewhouse

Hop Back



Use for improve the flavor and character of your brew

Tube Heating Exchanger



Use for rapid cooling for brewing sour beer and wort

Plate Heating Exchanger



Use for Two-stage wort cooling from Brewhouse to FV

Control System



Use for brewhouse control with Siemens PLC



## 24HL 3 Vessels Steam Brewing System

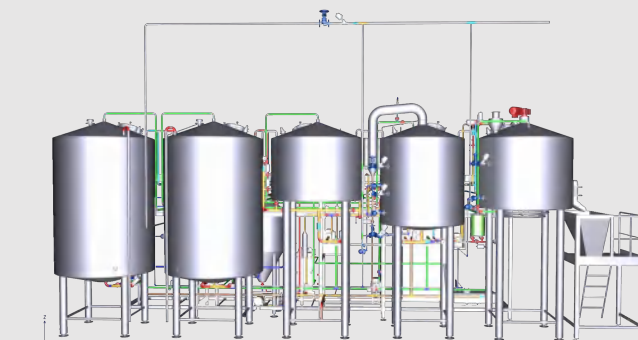
Area: 36m<sup>2</sup>  
10700mm\*3400mm\*4500mm

### ➤ Brewhouse Control

- CLT&HLT temperature auto control
- ML,KT & WP temperature auto control
- **Water mixing station for setting temperature and measuring filling volume for MT water filling & sparge water filling**
- Tank lights ON/OFF
- Pumps anti-slip protection
- Wort pump, HL pump, CL pump ON/OFF
- VFD control for all pumps (variable speed drive)
- **Material auto flow**
- Motor for rake ON/OFF
- VFD control for rake speed (variable speed drive)
- Digital display temperature of MLT,BK and WT
- Digital display temperature of hot,cold water & wort back of Heat Exchanger
- Alarm buzzer function

### ➤ Cellar Control

- Digital display temperature in cellar tanks
- Temperature auto control in GWT
- **Five stage temperature auto control in fermenters (Five stage for temperature rise & keeping for different beer)**
- **Condition be monitored on customers iPhone**
- Alarm buzzer function



### ➤ Delivery time:

- Production time: 70 working days
- Shipping time: 22-25 days
- Shipping date: 2020.09
- Arrival date: 2020.10

### ➤ Case Showing

- Shelter Brewing Co.

### ➤ Location

- AU

**Shelter**



Pipe for CIP automatic



Use for cleaning brewhouse tanks in auto model

Water Mixing Station



Use for automatic mixing of hot and cold water

Pressure Monitoring



Use for tank level detecting

Rotary Pump



Specially pump design for yeast

Overboiling Protect



Use for detecting wort during boiling on top of tank

Tube Heating Exchanger



Use for yeast propagation and transfer into fermenter

Air Filter



Use for preventing pump run when no fluid passed

Remote Control System



Use for wort collection during brew process

## 24HL 4 Vessels Steam Brewing System

Area: 35m<sup>2</sup>  
11000mm\*3150mm\*3200mm

### ➤ Brewhouse Control

- CLT HLT temperature auto control
- MT,LT,KT & WP temperature auto control
- ***Water mixing station for setting temperature and measuring filling volume for MT water filling & sparge water filling***
- Tank lights ON/OFF
- Pumps anti-slip protection
- Wort pump, HL,CL pump,ON/OFF
- VFD control for all pumps (variable speed drive)
- ***Material auto flow***
- Motor for rake ON/OFF
- VFD control for rake speed (variable speed drive)
- Digital display temperature in MT,LT,KT and WP
- Digital display temperature of hot ,cold water & wort back of Heat Exchanger
- Alarm buzzer function

### ➤ Delivery time:

- Production time: 70 working days
- Shipping time: 22-25 days
- Shipping date: 2020.09
- Arrival date: 2020.10

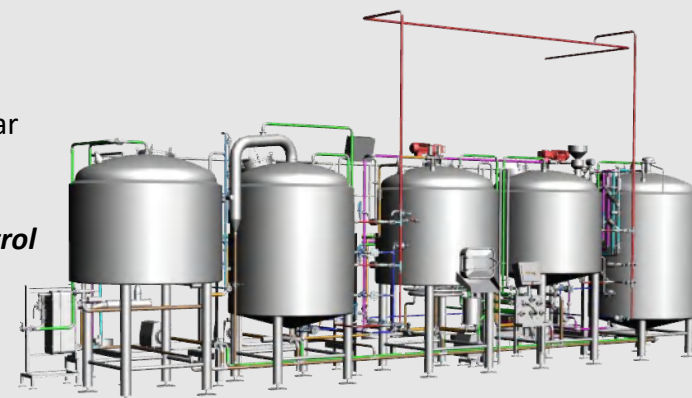
### ➤ Case Showing

- Running with thieves Brewing Co.
- **Location**
- AU



### ➤ Cellar Control

- Digital display temperature in cellar tanks
- Temperature auto control in GWT
- ***Five stage temperature auto control in fermenters (Five stage for temperature rise & keeping for different beer)***
- ***Condition be monitored on customers iPhone***
- Alarm buzzer function





Mash Paddle



Use for mixing grain and water in mashing process

Lauter Pake



Use for creating lauter grain bed and spent grain out

Pneumatic Valve



Use for auto fluid control in brewing process or CIP cleaning

Centrifugal Pump



VFD control for all pumps in Brewhouse

CIP Transfer Panel



Use for connecting all tank CIP arm in one panel

Steam Heating Exchanger



Use for heating hot water tank by steam

Plate Heating Exchanger



Use for Two-stage wort cooling from Brewhouse to FV

Control System



Use for brewhouse control with Siemens PLC



## 20HL 3 Vessels Steam Brewing System

### ➤ Brewhouse Control

- MMKT & HLT temperature digital display & auto control
- LT & WP temperature digital display
- ***Water mixing station for setting temperature and measuring filling volume for MT water filling & sparge water filling***
- Tank lights ON/OFF
- Pumps anti-slip protection
- Mash pump, wort pump, HL pump, RO pump ON/OFF
- VFD control for all pumps (variable speed drive)
- Material manual flow
- Motor for rake ON/OFF
- ***Spent Drain Auto Discharge***
- ***Recipes recording and Automated steps brewing***
- Programming Online Upgraded
- VFD control for rake speed (variable speed drive)
- Alarm buzzer function

### ➤ Delivery time:

- Production time: 60 working days
- Shipping time: 30-35 days
- Shipping date: 2020.06
- Arrival date: 2020.07

### ➤ Case Showing

- Cava Di Patsi Ike Brewing Co.

### ➤ Location

- Anargiri, Greece



Area: 35m<sup>2</sup>  
10000mm\*3500mm\*3000mm

### ➤ Cellar Control

- Digital display temperature in cellar tanks
- Temperature auto control in GWT
- ***Five stage temperature auto control in fermenters (Five stage for temperature rise & keeping for different beer)***
- ***Condition be monitored on customers iPhone***
- Alarm buzzer function



Steam Solenoid Valve



Use for Auto steam ON/OFF

Auto Steam Valve



The steam open/close could be controlled from 0%~100%

Motors Assembled on MMKT & LT



Motors ON/OFF and VFD control

Plate Heating Exchanger



Double stages for PHE, one is tap water, another is glycol water

Rake System



Rake ON/OFF, rotate in positive/negative direction

Control Cabinet



For brewhouse and cellar vessels control

Touch Screen for FV



Five stage temperature auto control in fermenters

Touch Screen for Brewhouse



All the functions could be controlled on the touch screen

[yolongbrewtech.com](http://yolongbrewtech.com)

## 13HL 2 Vessels Electric Brewing System

Area: 15m<sup>2</sup>

6350mm\*2350mm\*2550mm

### ➤ Brewhouse Control

- HLT temperature auto control
- MT & KT temperature auto control
- Water mixing station and measuring filling volume for MT water filling & sparge water filling
- Tank lights ON/OFF
- Pumps anti-slip protection
- Mash pump, wort pump, HL pump, RO pump ON/OFF
- VFD control for all pumps (variable speed drive)
- Motor for rake ON/OFF
- **Spent Drain Auto Discharge**
- **VFD control for rake speed (variable speed drive)**
- Digital display temperature on control panel
- Digital display temperature of hot water & wort back of Heat Exchanger
- Alarm buzzer function



### ➤ Delivery time:

- Production time: 60 working days
- Shipping time: 30-35 days
- Shipping date: 2020.06
- Arrival date: 2020.07

### ➤ Case Showing

- Black Flag Brewing Co.

### ➤ Location

- UK





Rake System



Better filtration performance

Water Mixing Station



Use for mixing of hot and cold water

Sparge Ring



Use for Lauter tun malt bed grain protection

Centrifugal Pump



VFD control for all pumps in Brewhouse

Wort Grant



Use for balance the lautering speed

Elec Heated HLT



Quick heating up rate by elec heating

Plate Heating Exchanger



Use for Two-stage wort cooling from Brewhouse to FV

Control System



Temperature Controller Panel



## 12HL 3 Vessels Steam Brewing System

### ➤ Brewhouse Control

- HLT temperature auto control
- MT,LT & KWP temperature auto control
- **Water mixing station for setting temperature and measuring filling volume for MT water filling & sparge water filling**
- Tank lights ON/OFF
- Pumps anti-slip protection
- Wort pump, HL pump, ON/OFF
- VFD control for all pumps (variable speed drive)
- **Material auto flow**
- Motor for rake ON/OFF
- VFD control for rake speed (variable speed drive)
- Digital display temperature in MT,LT and KWP
- Digital display temperature of hot water & wort back of Heat Exchanger
- Alarm buzzer function

### ➤ Delivery time:

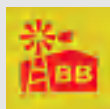
- Production time: 60 working days
- Shipping time: 20-22 days
- Shipping date: 2020.10
- Arrival date: 2020.11

### ➤ Case Showing

- Bailey Brewing Co.

### ➤ Location

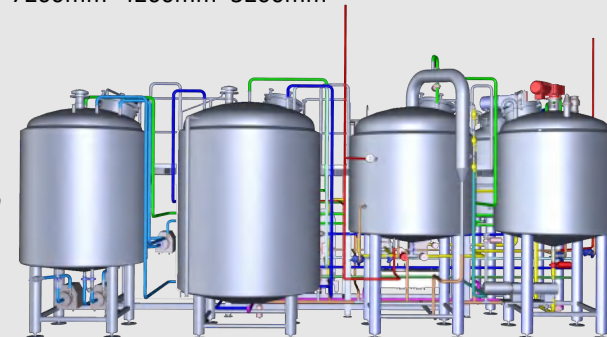
- AU



### ➤ Cellar Control

- Digital display temperature in cellar tanks
- Temperature auto control in GWT
- **Five stage temperature auto control in fermenters (Five stage for temperature rise & keeping for different beer)**
- **Condition be monitored on customers iPhone**
- Alarm buzzer function

Area: 30m<sup>2</sup>  
7200mm\*4200mm\*3200mm



Mash Paddle



Use for mixing grain and water in mashing process

Lauter Rake



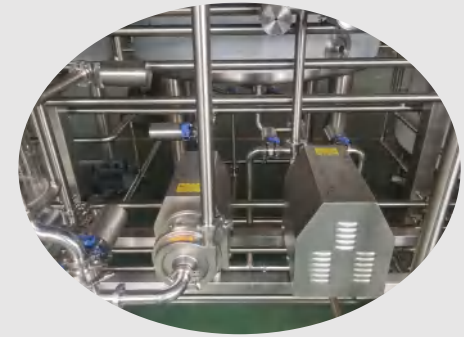
Use for creating lauter grain bed and spent grain out

Pressure Monitoring



Use for glycol water auto supply

Centrifugal Pump



VFD control for all pumps in Brewhouse

Wort Grant/buffern Tank



Use for protecting mash bed during wort transfer

Steam Condensate Tank



Use for steam condensate water collection and return

Independent Glycol Control



Use for glycol control in supplying for brewhouse and cellar tanks

Brewhouse Touch Screen



Use for brewhouse operation

## 10HL 2 Vessels Steam Brewing System

Area: 9.5m<sup>2</sup>  
4200mm\*2200mm\*2800mm

### ➤ Brewhouse Control

- HLT temperature auto control
- HLT,MT Anti Dry-combustion Auto Protection
- Automatic Hot Water Plumbing
- MT ,k/WT temperature auto control
- Wort Temperature after wort PHX auto control
- **Automatic water mixing station for setting temperature and measuring filling volume for M/KT water filling & sparge water filling**
- Digital display temperature on Control panel
- Tank lights ON/OFF
- Pumps anti-slip protection
- Mash pump, wort pump, HWT pump ON/OFF
- VFD control for all pumps (variable speed drive)
- VFD control for rake speed (variable speed drive)
- Level Switch to Prevent MASH Tank Over Boil
- Digital display temperature of hot water & wort back of Heat Exchanger
- Alarm buzzer function

### ➤ Delivery time:

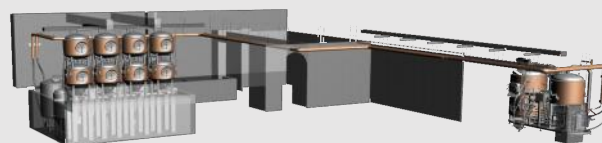
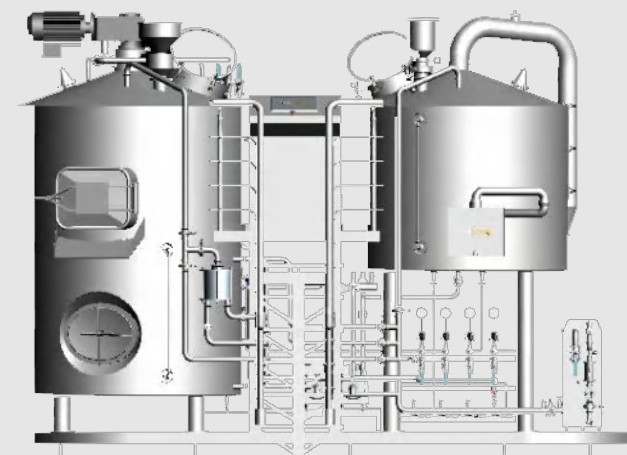
- Production time: 70 working days
- Shipping time: 22-25 days
- Shipping date: 2020.09
- Arrival date: 2020.10

### ➤ Production Quantity: 3

### ➤ Buyer Location: CHN, CA, EU

### ➤ Cellar Control

- Digital display temperature in cellar tanks
- Temperature auto control in GWT
- **Five stage temperature auto control in fermenters (Five stage for temperature rise & keeping for different beer)**
- **Condition be monitored on customers iPhone**
- Alarm buzzer function



### ➤ Case Showing

- Hurricane BrewPub Co.

### ➤ Location

- CHN





Lauter Rake



Use for creating lautering grain bed and spent grain out

Water Mixing Station



Use for automatic mixing of hot and cold water

Boiling Proof



Use for wort boiling protection

Auto Steam Valve



Temp display & auto control

Stacked Cellar Tank



Save the floor area

Fermenters Control Panel



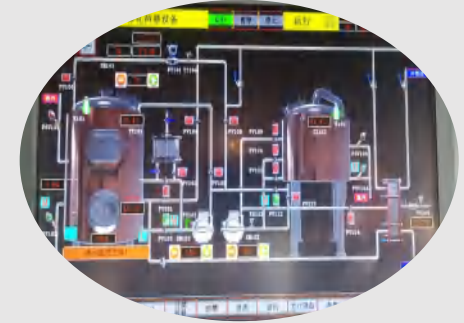
All fermenters and glycol tanks temp display & control

Brew Recipes Setting



Use for multiple brew recipes setting & recording

Brewhouse Control System



Use for brewhouse operation



## 10HL 3 Vessels Steam Brewing System

Area: 22m<sup>2</sup>  
6300mm\*3500mm\*2600mm

### ➤ Brewhouse Control

- HLT temperature auto control
- HLT,MT Anti Dry-combustion Auto Protection
- Automatic Hot Water Plumbing
- MT ,k/WT temperature auto control
- Wort Temperature after wort PHX auto control
- **Automaic water mixing station for setting temperature and measuring filling volume for M/KT water filling & sparge water filling**
- Digital display temperature on Control panel
- Tank lights ON/OFF
- Pumps anti-slip protection
- Mash pump, wort pump, HWT pump ON/OFF
- VFD control for all pumps (variable speed drive)
- VFD control for rake speed (variable speed drive)
- Level Switch to Prevent MASH Tank Over Boil
- Digital display temperature of hot water & wort back of Heat Exchanger
- Alarm buzzer function

### ➤ Delivery time:

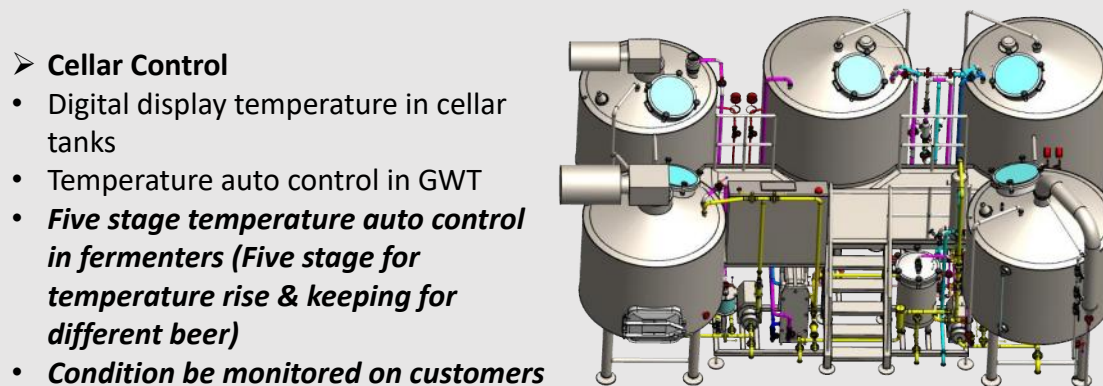
- Production time: 70 working days
- Shipping time: 28-35 days
- Shipping date: 2021.10
- Arrival date: 2022.2

### ➤ Case Showing

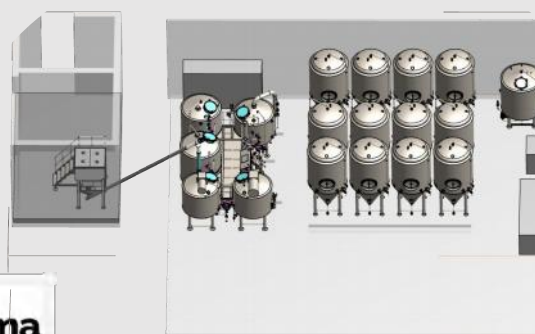
- Nama Brewing Co.

### ➤ Location

- Genoa,Italy



- **Cellar Control**
- Digital display temperature in cellar tanks
- Temperature auto control in GWT
- **Five stage temperature auto control in fermenters (Five stage for temperature rise & keeping for different beer)**
- **Condition be monitored on customers iPhone**
- Alarm buzzer function



Lauter Rake



Use for creating lauter grain bed and spent grain out

Water Mixing Station



Use for automatic mixing of hot and cold water

Anti-Over Boil Protection



Anti-Over boil and discontinuous boil process

Centrifugal Pump



VFD control for all pumps in Brewhouse

Hop Back



Use for improve the flavor and character of your brew

Tube Heating Exchanger



Use for rapid cooling for brewing sour beer and wort

Plate Heating Exchanger



Use for Two-stage wort cooling from Brewhouse to FV

Remote Control System



Use for condition be monitored on customers iPhone/computer

## 10HL 2 Vessels Electirc Brewing System

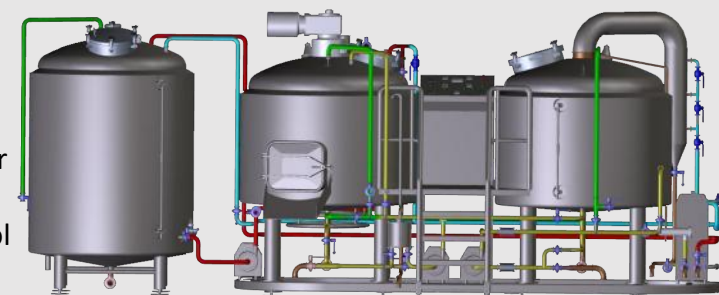
Area: 12m<sup>2</sup>  
5500mm\*2200mm\*2600mm

### ➤ Brewhouse Control

- KWT,HLT temperature auto control
- HLT,KWT Anti Dry-combustion Auto Protection
- Auto Record and Display of water filling volume for MLT water filling & sparge
- Temperature digital display on all tanks
- Temperature digital display of water mixing station and Wort Temperature after PHX
- Tank lights ON/OFF
- **VFD control for all pumps (variable speed drive)**
- **VFD control for rake speed (variable speed drive)**
- **Level Switch to Prevent KWT Over Boil**

### ➤ Cellar Control

- Temperature Digital display temperature in cellar tanks
- Temperature auto control of cellar tanks
- Temperature auto control of glycol tank



### ➤ Delivery time:

- Production time: 55 working days
- Shipping time: 30-32 days
- Shipping date: 2020.03
- Arrival date: 2020.04

### ➤ Case Showing

- SAS LA MANDRA

### ➤ Location

- Soulages, France



### ➤ Production Quantity: 5

### ➤ Buyer Location: EU, USA, CA



Rake System



Combined for  
Raking&Ploughing

IFM Flow Meter



Mashing-In Volume/Striking  
Volume Record and Display

Low Density Heating Element



SS316 Immerse Heating Element

Ormon Temperature Controller



Temperature Controller  
Panel

IFM Level Switch



Avoid HLT&KWT from Dry-  
Heating

IFM Level Switch



Use for preventing over  
boiling in kettle tank

Plate Heating Exchanger



Two-stage PHE for wort  
cooling during knock-out

Immergence Button



System shutdown during  
Immergence



## 10HL 2 Vessels Driect-Fire Brewing System

Area: 9m<sup>2</sup>  
4200mm\*2100mm\*2500mm

### ➤ Brewhouse Control

- Gas Heating for kettle & HLT
- PLC + Manual valves for better control & high cost effective
- KT + HLT Auto controlled on HMI
- HLT,MT Anti Dry-combustion Auto Protection
- Wort Temperature after wort PHX auto control
- **Automaic water mixing station for setting temperature and measuring filling volume for M/KT water filling & sparge water filling**
- Digital display temperature on Control panel
- Tank lights ON/OFF
- HLT with level displaying on HMI & Auto feeding
- Mash pump, wort pump, HWT pump ON/OFF
- VFD control for all pumps (variable speed drive)
- VFD control for rake speed (variable speed drive)
- **Level Switch to Prevent MASH Tank Over Boil**
- Digital display temperature of hot water & wort back of Heat Exchanger
- Alarm buzzer function

### ➤ Delivery time:

- Production time: 55 working days
- Shipping time: 20-25 days
- Shipping date: 2021.12
- Arrival date: 2022.1

### ➤ Case Showing

- Batavia Brewing Co.

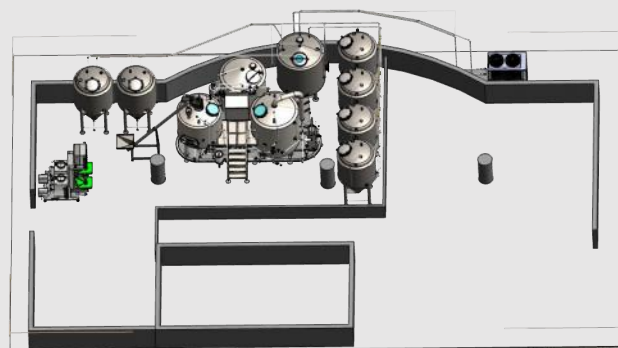
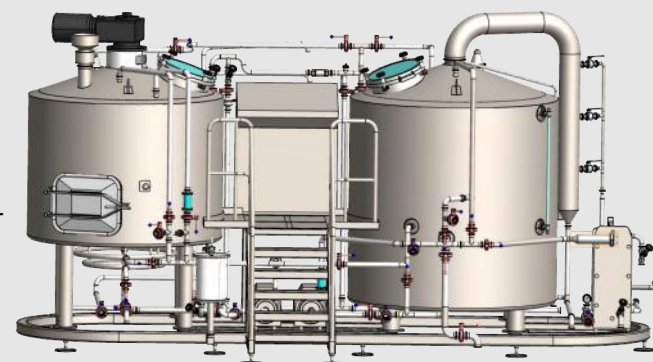
### ➤ Location

- AU



### ➤ Cellar Control

- Integrated BH & FV PLC control system
- Digital display temperature in cellar tanks
- Temperature auto control in CWT,GWT
- **Five stage temperature auto control in fermenters (Five stage for temperature rise & keeping for different beer)**
- **Condition be monitored on customers iPhone**
- Alarm buzzer function



### ➤ Production Quantity: 3

### ➤ Buyer Location: USA, AU

Skid Brewhouse



Skid design for better transportation & installation

Water Mixing Station



Manual strike water temp regulation & flow auto record

Lauter Rake



Use for Lauter tun malt bed grain protection

Emergency Button



Rake emergency stop for person damage by rakes

Integrated CIP & Wort Pipe



Better clean performance with less sanitary dead space

HLT



HLT was controlled by BH PLC and then feeded by PHE first cooling stage-Tap water for energy saving

Plate Heating Exchanger



Use for wort cooling from Brewhouse to FV

PLC /HMI + Manual valve



Accurate control by PLC, Manual valves for high cost effective

## 7HL 2 Vessels Steam Brewing System

Area: 9m<sup>2</sup>  
4000mm\*2200mm\*2300mm

### ➤ Brewhouse Control

- Steam Heating for mash & kettle
- PLC + Manual valves for better control & high cost effective
- MT+KT + HLT Auto controlled on HMI
- HLT,MT Anti Dry-combustion Auto Protection
- Wort Temperature after wort PHX auto control
- **Automatic water mixing station for setting temperature and measuring filling volume for M/KT water filling & sparge water filling**
- **Digital display temperature on Control panel**
- Tank lights ON/OFF
- HLT with level displaying on HMI & Auto feeding
- Mash pump, wort pump, HWT pump ON/OFF
- VFD control for all pumps (variable speed drive)
- VFD control for rake speed (variable speed drive)
- Level Switch to Prevent MASH Tank Over Boil
- Digital display temperature of hot water & wort back of Heat Exchanger
- Alarm buzzer function

### ➤ Delivery time:

- Production time: 55 working days
- Shipping time: 30-32 days
- Shipping date: 2021.09
- Arrival date: 2021.10

### ➤ Case Showing

- Nieuw Sion

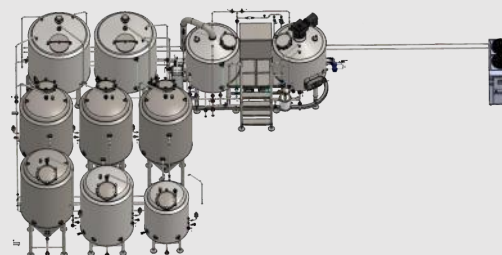
### ➤ Location

- Netherlands



### ➤ Cellar Control

- Integrated BH & FV PLC control system
- Digital display temperature in cellar tanks
- Temperature auto control in CWT,GWT
- **Five stage temperature auto control in fermenters (Five stage for temperature rise & keeping for different beer)**
- **Condition be monitored on customers iPhone**
- Alarm buzzer function





Mash Paddle



Use for mixing grain and water in mashing process

Water Mixing Station



Manual strike water temp regulation & flow auto record

Anti-Over Boil Protection



Anti-Over boil and discontinuous boil process

Emergency Button



Emergency stop for person damage by rakes

Lauter rake



Use for creating lautering grain bed and spent grain out

Electric Heated HLT



Quick heating up rate by electric heating

Plate Heating Exchanger



Tap water & Glycol for energy saving

PLC /HMI + Manual valve



Accurate control by PLC, Manual valves for high cost effective

## 6HL 2 Vessels Electric Brewing System

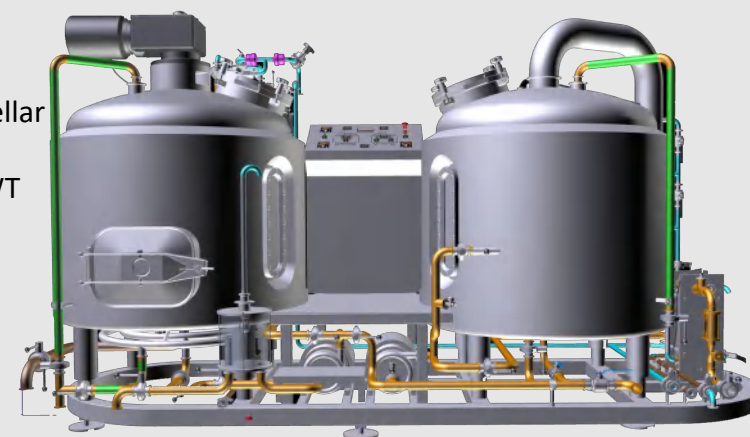
Area: 8m<sup>2</sup>  
3900mm\*2000mm\*2300mm

### ➤ Brewhouse Control

- KT Anti Dry-combustion Auto Protection
- MT ,KWP temperature auto control
- Wort Temperature after wort PHX auto control
- **Water mixing station for setting temperature and measuring filling volume for M/KT water filling & sparge water filling**
- Digital display temperature on Control panel
- Tank lights ON/OFF
- **Pumps anti-slip protection**
- Wort pump ON/OFF
- VFD control for all pumps (variable speed drive)
- VFD control for rake speed (variable speed drive)
- Level Switch to Prevent Kettle Tank Over Boil
- Digital display temperature of wort back of Heat Exchanger

### ➤ Cellar Control

- Digital display temperature in cellar tanks
- Temperature auto control in GWT
- Alarm buzzer function



### ➤ Delivery time:

- Production time: 55 working days
- Shipping time: 25-28 days
- Shipping date: 2019.10
- Arrival date: 2019.11

### ➤ Case Showing

- Whalebone brewing Co.

### ➤ Location

- AU



### ➤ Production Quantity: 10

### ➤ Buyer Location: AU, CH, UK

Rake System



Use for creating grain bed and spent grain out

Water Mixing Station



Use for mixing of hot and cold water

Electrical Heating Kettle



Use for boiling wort by electrical heating element

Tangential Inlet For WP



Use for creating whirlpool in the tank and make the wort more clear

Plate Sight Glass



Use for inspection grain bed and wort status

Level Sensor



Use for preventing over boiling in kettle tank

Plate Heating Exchanger



Use for wort cooling from Brewhouse to FV

Wort Grant/buffern



Use for protecting mash bed during wort transfer



## 5HL 2 Vessels Electric Brewing System

Area: 9m<sup>2</sup>  
4500mm\*2000mm\*1900mm

### ➤ Brewhouse Control

- HLT temperature auto control
- HLT,MT Anti Dry-combustion Auto Protection
- **Automatic Hot Water Plumbing**
- MT ,k/WT temperature auto control
- Wort Temperature after wort PHX auto control
- Water mixing station for setting temperature and measuring filling volume for M/KT water filling & sparge water filling
- Digital display temperature on Control panel
- Tank lights ON/OFF
- Mash pump, wort pump, HWT pump ON/OFF
- VFD control for all pumps (variable speed drive)
- VFD control for rake speed (variable speed drive)
- **Level Switch to Prevent MASH Tank Over Boil**
- Digital display temperature of hot water & wort back of Heat Exchanger
- Alarm buzzer function

### ➤ Delivery time:

- Production time: 55 working days
- Shipping time: 25-28 days
- Shipping date: 2019.07
- Arrival date: 2019.08

### ➤ Case Showing

- Alive Brewig Co.

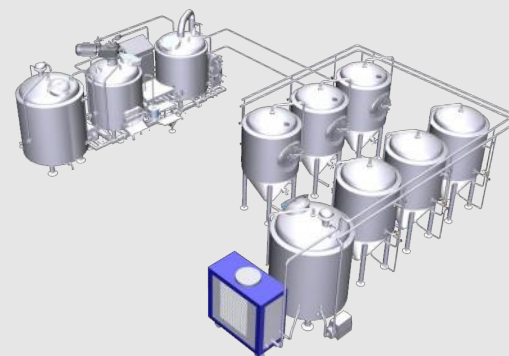
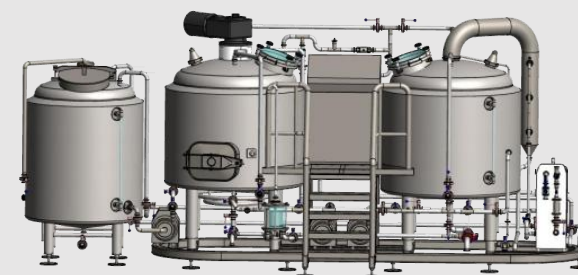
### ➤ Location

- Singapore



### ➤ Cellar Control

- Digital display temperature in cellar tanks
- Temperature auto control in CWT,GWT
- Alarm buzzer function



### ➤ Production Quantity: 5

### ➤ Buyer Location: Singapore, UK, USA, AU

Rake System



Use for creating grain bed  
and spent grain out

Water Mixing Station



Use for water temp adjust

Wort Sample



Use for wort sample to test

Temp gauge



Use for show the temp  
of cooled wort

Electric Heating Tube



Use for boiling

Sparger



Use for sparging process

Level sensor



Use for preventing over  
boiling in kettle tank

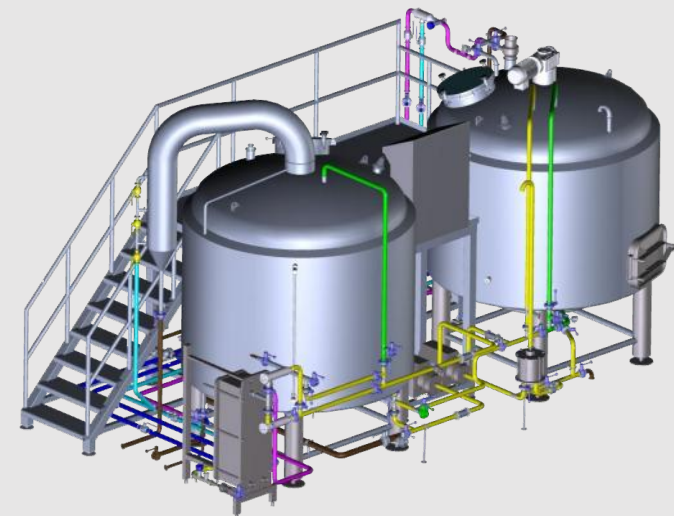
Ormon Temperature Controller



Temperature Controller  
Panel

## 20BBL 2 Vessels Steam Brewing System

Area: 15m<sup>2</sup>  
6000mm\*2500mm\*2600mm



### ➤ Brewhouse Control

- MLT,KWT,HLT temperature auto control
- Auto Record and Display of water filling volume for MLT water filling & sparge
- Temperature digital display on all tanks
- Temperature digital display of water mixing station and Wort Temperature after PHX
- Tank lights ON/OFF
- VFD control for all pumps (variable speed drive)
- VFD control for rake speed (variable speed drive)
- Level Switch to Prevent KWT Over Boil
- Pump Idling Protection
- Double Strainer before PHE
- ***Kettle Souring and Whirlpool Hopping Function Manually***
- ***Remote Monitor and Control by Phone/Pad/Computer***
- ***Remote Commissioning and Trouble Shooting By Yolong***

### ➤ Delivery time:

- Production time: 55 working days
- Shipping time: 30-32 days
- Shipping date: 2021.01
- Arrival date: 2021.03

### ➤ Case Showing

- Mister B Brew Co.

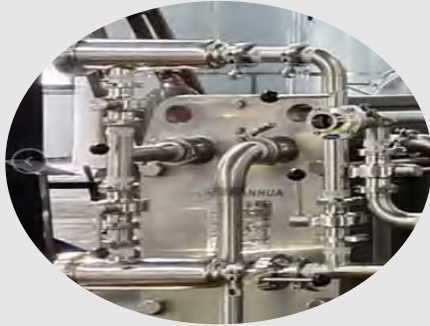
### ➤ Location

- Mantua,Italy





Double Strainer



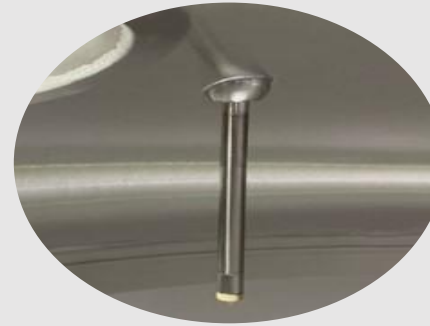
Use for Protect PHE from Chogging

Lauter Rake



Use for creating lauter grain bed and spent grain out

IFM Level Switch



Use for over-boiling protection

Centrifugal Pump



VFD control for all pumps in Brewhouse

IFM Flow Switch



Use for protecting pump from idling

Kettle Souring/Whirlpool Hopping



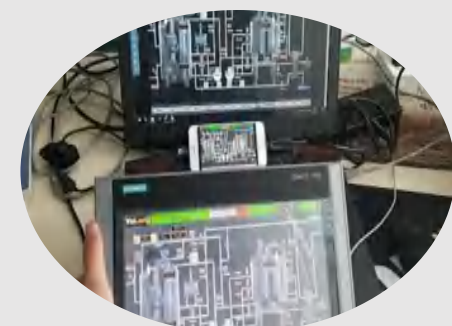
Use for Kettle Souring and Whirlpooling Hopping

IFM Flow Meter



Mashing-In Volume/Striking Volume Record and Display

Remote Control



Brewhouse Remote Monitor/Control By Phone/Computer

[yolongbrewtech.com](http://yolongbrewtech.com)

## 15BBL 3 Vessels Steam Brewing System

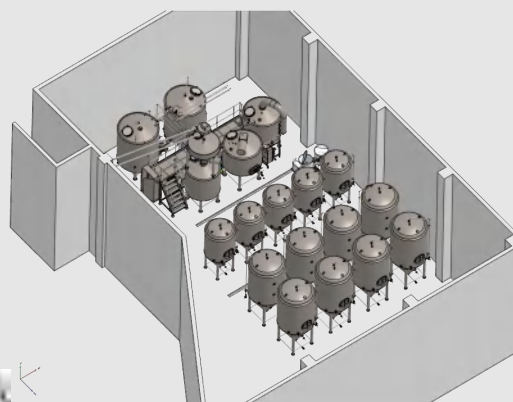
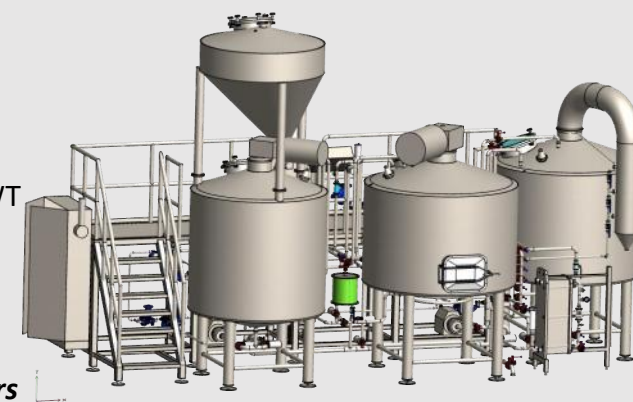
Area: 30m<sup>2</sup>  
8500mm\*3500mm\*4600mm

### ➤ Brewhouse Control

- Steam Heating brewhouse with automated control system
- MT ,LT ,k/WT temperature auto control
- 2 times HLT & CLT for water station with auto feeding and supplying
- Wort Temperature after wort PHX auto control
- **Automatic water mixing station for setting temperature and measuring filling volume for M/KT water filling & sparge water filling**
- Remote access & programming online updating
- Tank lights ON/OFF
- Pumps anti-slip protection
- Mash pump, wort pump, HWT pump ON/OFF
- VFD control for all pumps (variable speed drive)
- VFD control for rake speed (variable speed drive)
- Level Switch to Prevent MASH Tank Over Boil
- **Tubular Heat exchanger for the wort quick cooling before whirlpool**
- Alarm buzzer function

### ➤ Cellar Control

- Digital display temperature in cellar tanks
- Temperature auto control in CWT,GWT
- **Five stage temperature auto control in fermenters (Five stage for temperature rise & keeping for different beer)**
- **Condition be monitored on customers iPhone**
- Alarm buzzer function



### ➤ Delivery time:

- Production time: 60 working days
- Shipping time: 30-32 days
- Shipping date: 2020.09
- Arrival date: 2020.10

### ➤ Case Showing

- Reset Brewing Co.

### ➤ Location

- Slovenia

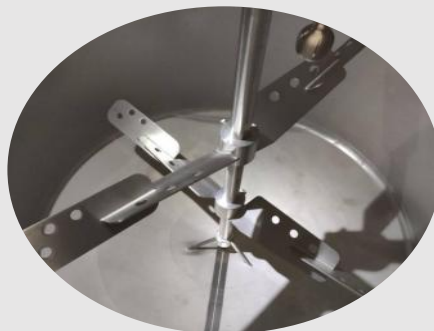


Lauter Rake



Use for creating lautering grain bed and spent grain out

Double Gator Paddle



For better mashing efficiency

Integrated CIP Station



Convenient CIP operation for BH

Centrifugal Pump



VFD control for all pumps in Brewhouse

Plate Heating Exchanger



Use for Two-stage wort cooling from Brewhouse to FV

Auto water supply



Separated Water steam for BH & filling lines etc

Automated Steam control



High safety & reliability steam pipelines

Remote Control System



Use for condition be monitored on customers iPhone/computer

[yolongbrewtech.com](http://yolongbrewtech.com)



## 10BBL 2 Vessels Steam Brewing System

Area: 23m<sup>2</sup>  
5200mm\*4500mm\*4200mm

### ➤ Brewhouse Control

- HLT temperature auto control
- HLT,MT Anti Dry-combustion Auto Protection
- Automatic Hot Water Plumbing
- MT ,k/WT temperature auto control
- Wort Temperature after wort PHX auto control
- Automatic water mixing station for setting temperature and measuring filling volume for M/KT water filling & sparge water filling
- Digital display temperature on Control panel
- Pumps anti-slip protection
- Strike water automated regulation
- Mash pump, wort pump, HWT pump ON/OFF
- VFD control for all pumps (variable speed drive)
- VFD control for rake speed (variable speed drive)
- Level Switch to Prevent MASH Tank Over Boil
- Digital display temperature of hot water & wort back of Heat Exchanger
- Alarm buzzer function

### ➤ Delivery time:

- Production time: 55 working days
- Shipping time: 35-36 days
- Shipping date: 2021.04
- Arrival date: 2021.06

### ➤ Case Showing

- Bearded Tang Brewery Co.

### ➤ Location

- CA.USA



### ➤ Cellar Control

- Digital display temperature in cellar tanks
- Temperature auto control in CWT,GWT
- **Five stage temperature auto control in fermenters (Five stage for temperature rise & keeping for different beer)**
- **Condition be monitored on customers iPhone**
- Alarm buzzer function



Lauter Rake



Use for creating lautering grain bed and spent grain out

Water Mixing Station



Use for automatic mixing of hot and cold water

Anti-Over Boil Protection



Anti-Over boil and discontinuous boil process

Integrated CIP Stations



All integrated CIP pipelines for high sanitary

Steam Pipelines



Automated Steam pipelines with high safety & reliability

Centrifugal Pump



VFD control for all pumps in Brewhouse

Plate Heating Exchanger



Use for Two-stage wort cooling from Brewhouse to FV

2\* HMI For Brewhouse



One on platform one hang on tank side

## 10BBL 2 Vessels Dricet-Fire Brewing System

Area: 10m<sup>2</sup>  
4500mm\*2300mm\*2600mm

### ➤ Brewhouse Control

- HLT,CLT, KWT temperature auto control and Display
- HLT,KWT Anti Dry-combustion Auto Protection
- KWT Anti Over-Boiling Auto Protection
- Wort Temperature after wort PHX Auto Display
- **Automaic water mixing station for setting temperature and measuring filling volume for M/KT water filling & sparge water filling**
- Pumps anti-Idling protection
- VFD control for all pumps (variable speed drive)
- VFD control for rake speed (variable speed drive)
- **Kettle Souring and Whirlpool Hopping Function Manually**
- Remote Commissioning and Trouble Shooting By Yolong
- Water Auto Filling for CLT
- Brewhouse Self-CIP Control by HMI
- Water&Mash Flow Control by HMI
- Drain Flow Control by HMI
- **Burner Density on KWT Regulatable**
- **Remote Commissioning and Trouble Shooting By Yolong**

### ➤ Delivery time:

- Production time: 55 working days
- Shipping time: 30-32 days
- Shipping date: 2021.06
- Arrival date: 2021.07

### ➤ Case Showing

- USA

### ➤ Location

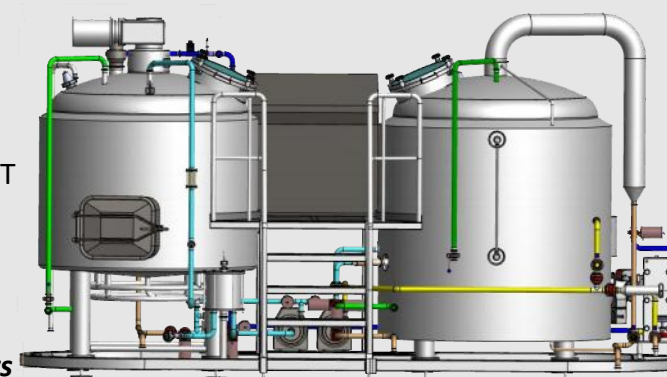
- USA

### ➤ Production Quantity: 5

### ➤ Buyer Location: USA

### ➤ Cellar Control

- Digital display temperature in cellar tanks
- Temperature auto control in CWT,GWT
- **Five stage temperature auto control in fermenters (Five stage for temperature rise & keeping for different beer)**
- **Condition be monitored on customers iPhone**
- Alarm buzzer function
- **Remote Monitor and Control by Phone/Pad/Computer**
- **Remote Commissioning and Trouble Shooting By Yolong**
- **Recipe Function**





Lauter Rake



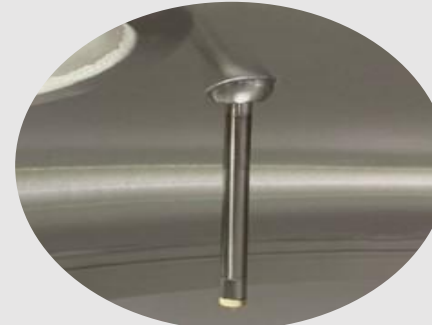
Combined for  
Raking&Ploughing

IFM Flow Switch



Use for protecting pump from  
idling

IFM Level Switch



Use for over-boiling and Dry-  
Heating protection

Recipe Function



Ricipe recording and  
automation  
fermentation

Immergence Button



System shutdown during  
Immergence

UL Control Cabin/Parts



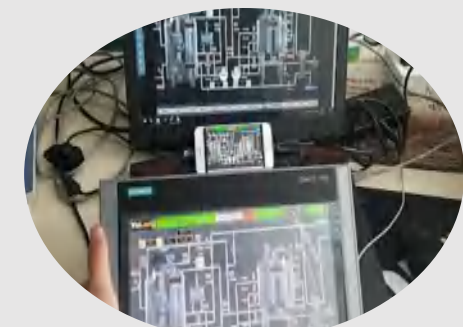
All parts&Control Cabin UL  
listed

Burket Flowmeter+Auto Valve



Auto-mixing of hot and cold  
water to target temperature  
and Volume

Remote Control



Brewhouse Remote  
Monitor/Control By  
Phone/Computer  
[yolongbrewtech.com](http://yolongbrewtech.com)

## 10BBL 2 Vessels Stack-Steam Brewing System

Area: 10m<sup>2</sup>  
4200mm\*2600mm\*4500mm

### ➤ Brewhouse Control

- HLT temperature auto control
- HLT,MT Anti Dry-combustion Auto Protection
- Automatic Hot Water Plumbing
- MT ,k/WT temperature auto control
- Wort Temperature after wort PHX auto control
- **Automatic water mixing station for setting temperature and measuring filling volume for M/KT water filling & sparge water filling**
- Digital display temperature on Control panel
- Tank lights ON/OFF
- **Pumps anti-slip protection**
- Mash pump, wort pump, HWT pump ON/OFF
- VFD control for all pumps (variable speed drive)
- VFD control for rake speed (variable speed drive)
- Level Switch to Prevent MASH Tank Over Boil
- Digital display temperature of hot water & wort back of Heat Exchanger
- Alarm buzzer function

### ➤ Delivery time:

- Production time: 50 working days
- Shipping time: 30-35 days
- Shipping date: 2022.03
- Arrival date: 2022.04

### ➤ Case Showing

- 851 Brewing Co.

### ➤ Location

- New South Wales, Australia



### ➤ Cellar Control

- Digital display temperature in cellar tanks
- Temperature auto control in CWT,GWT
- **Five stage temperature auto control in fermenters (Five stage for temperature rise & keeping for different beer)**
- **Condition be monitored on customers iPhone**
- Alarm buzzer function



### ➤ Production Quantity: 3

### ➤ Buyer Location: AU, USA

Lauter Rake



Combined for  
Raking&Ploughing

Water Mixing Station



Use for protecting pump from  
idling

Hops Adding system



Use for over-boiling and Dry-  
Heating protection

Boiling proof



Ricpe recording and  
automation  
fermentation

Steam Pipelines



System shutdown during  
Immergence

Centrifigal Pump



All parts&Control Cabin  
UL listed

2\* HMI For Brewhouse



Auto-mixing of hot and cold  
water to target  
temperature and Volume

Remote Control



Brewhouse Remote  
Monitor/Control By  
Phone/Computer



## 7BBL 2 Vessels Steam Brewing System

Area: 8.8m<sup>2</sup>  
4200mm\*2100mm\*2600mm

### ➤ Brewhouse Control

- HLT,CLT, MLT, KWT temperature auto control and Display
- KWT Anti Over-Boiling Auto Protection
- Wort Temperature after wort PHX Auto Display
- **Automaic water mixing station for setting temperature and measuring filling volume for M/KT water filling & sparge water filling**
- Wort Flow volume from MLT to KWT auto Control and Recorded
- Pumps anti-Idling protection
- VFD control for all pumps (variable speed drive)
- VFD control for rake speed (variable speed drive)
- Alarm buzzer function
- Tank lights ON/OFF
- **Kettle Souring and Whirlpool Hopping Function Manually**
- **Water Auto Filling for CLT**
- Water&Mash Flow Control by HMI
- Drain Flow Control by HMI
- **Brewhouse Self-CIP Control by HMI**
- **UL Certification**

### ➤ Delivery time:

- Production time: 70 working days
- Shipping time: 30-35 days
- Shipping date: 2022.03
- Arrival date: 2022.04

### ➤ Cellar Control

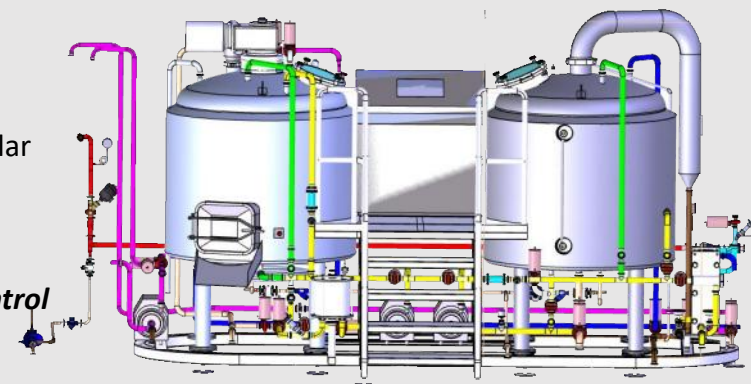
- Digital display temperature in cellar tanks
- Temperature auto control in CWT,GWT
- **Five stage temperature auto control in fermenters (Five stage for temperature rise & keeping for different beer)**
- **Condition be monitored on customers iPhone**
- Alarm buzzer function

### ➤ Case Showing

- USA

### ➤ Location

- USA



IFM Flowmeter



Record/Auto Control Volume  
from MLT to KWT

IFM Flow Switch



Use for protecting pump from  
idling

IFM Level Switch



Use for over-boiling and Dry-  
Heating protection

Immersion Button



System shutdown  
during Immersion

UL Control Cabin/Parts



All parts&Control Cabin UL  
listed

Burket Flowmeter+Auto Valve



Auto-mixing of hot and  
cold water to target  
temperature and Volume

Recipe function



Recipe recording and  
automation fermentation

Brewhouse Control



PLC+HMI with auto valves

## 5BBL 2 Vessels Electric Brewing System

Area: 5m<sup>2</sup>  
3500mm\*1500mm\*2300mm

### ➤ Brewhouse Control

- HLT temperature auto control
- HLT,MT Anti Dry-combustion Auto Protection
- Automatic Hot Water Plumbing
- MT ,k/WT temperature auto control
- Wort Temperature after wort PHX auto control
- **Automaic water mixing station for setting temperature and measuring filling volume for M/KT water filling & sparge water filling**
- Digital display temperature on Control panel
- Tank lights ON/OFF
- **Pumps anti-slip protection**
- Mash pump, wort pump, HWT pump ON/OFF
- VFD control for all pumps (variable speed drive)
- VFD control for rake speed (variable speed drive)
- Level Switch to Prevent MASH Tank Over Boil
- Digital display temperature of hot water & wort back of Heat Exchanger
- Alarm buzzer function

### ➤ Delivery time:

- Production time: 50 working days
- Shipping time: 7-8 days
- Shipping date: 2019.05
- Arrival date: 2019.05

### ➤ Case Showing

- MercedesMe Outpost

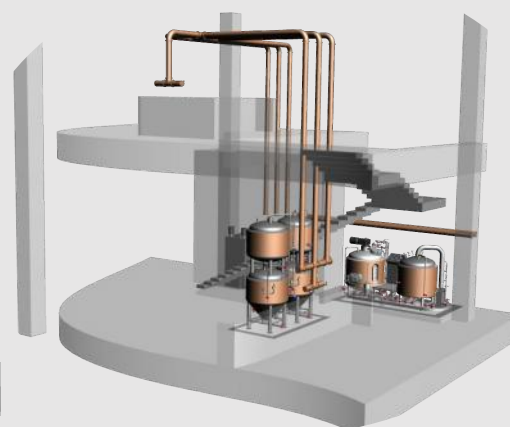
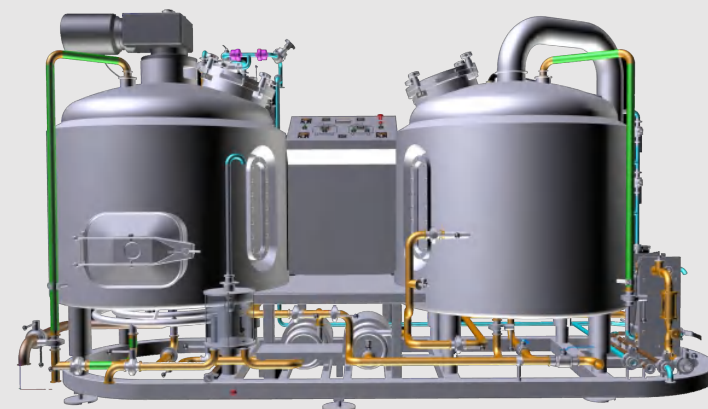
### ➤ Location

- CHN



### ➤ Cellar Control

- Digital display temperature in cellar tanks
- Temperature auto control in GWT
- Alarm buzzer function



### ➤ Production Quantity: 2

### ➤ Buyer Location: ShenZhen, ShenYang



Rake system



Use for creating grain bed  
and spent grain out

Water Mixing Station



Use for mixing of hot and cold  
water

Mash motor



Use for VFD control of mash  
rake speed

Tangential inlet for WP



Use for creating  
whirlpool in the tank  
and make the wort  
more clear

Plate sight glass



Use for inspection grain  
bed and wort status

Spare steam jacket



Use for replace electrical  
heating into steam  
heating

Plate Heating Exchanger



Use for Two-stage wort  
cooling from Brewhouse to  
FV

Control System for glycol



Use for cooling control of  
brewhouse and cellar tanks

## 5BBL 2 Vessels Electric Brewing System

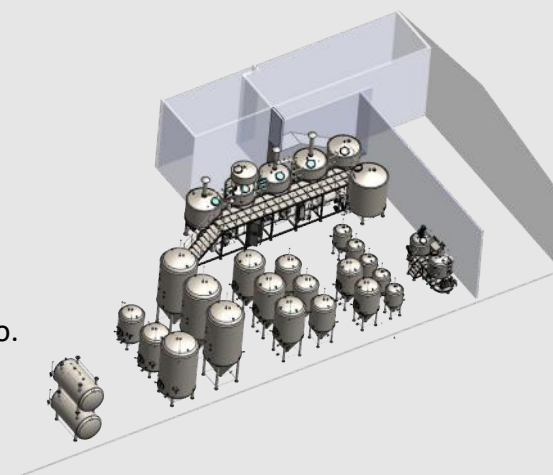
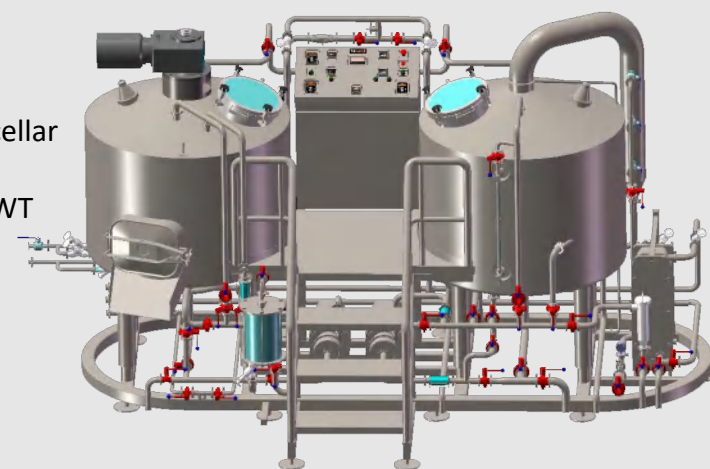
Area: 5m<sup>2</sup>  
3500mm\*1500mm\*2300mm

### ➤ Brewhouse Control

- Semi-auto control system for both of BH & Fermentation
- MT ,k/WT temperature auto control
- ***Both of Elec & Steam heating for future change over***
- Wort Temperature after wort PHX auto control
- ***Manually water mixing station for setting temperature and measuring filling volume for M/KT water filling & sparge water filling***
- Digital display temperature on Control panel
- Tank lights ON/OFF
- Mash pump, wort pump, HWT pump ON/OFF
- VFD control for all pumps (variable speed drive)
- VFD control for rake speed (variable speed drive)
- Level Switch to Prevent MASH Tank Over Boil
- ***Integrated CIP & Wort Pipelines for better cleaning***
- Digital display temperature of hot water & wort back of Heat Exchanger
- Alarm buzzer function

### ➤ Cellar Control

- Digital display temperature in cellar tanks
- Temperature auto control in GWT
- Alarm buzzer function



### ➤ Delivery time:

- Production time: 50 working days
- Shipping time: 30-35 days
- Shipping date: 2022.03
- Arrival date: 2022.05

### ➤ Case Showing

- Hall & Hound Brewing Co.

### ➤ Location

- GA,USA



Integrated Cabinet



Cost effective option for  
little brewpub

Elec heating option



UL Standard of heat tube plug

Steam heating option



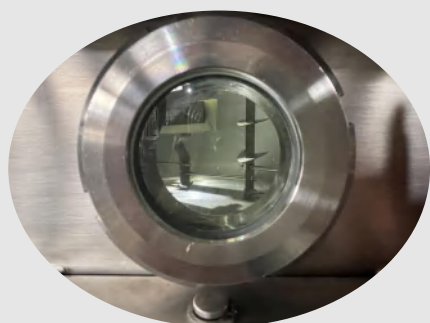
Steam heating available for  
future

Rake emergency stop



Rake EMERGENCY  
STOP for protection

Grain hatch galss



For better mashing  
observation

Electric Heating Elements



Explosion-proof elec  
heating & IP66 water-  
proof class

Plate Heating Exchanger



Use for Two-stage wort  
cooling from Brewhouse to  
FV

Control cabinet standards



Registered with UL certification



## 5HL 2 Vessels Electric Brewing System

Area: 8m<sup>2</sup>  
5500mm\*1500mm\*2300mm

### ➤ Brewhouse Control

- Semi-auto control system for both of BH
- MT ,k/WT temperature auto control
- Wort Temperature after wort PHX auto control
- Manually water mixing station for setting temperature and measuring filling volume for M/KT water filling & sparge water filling
- Digital display temperature on Control panel
- Tank lights ON/OFF
- Mash pump, wort pump, HWT pump ON/OFF
- VFD control for all pumps (variable speed drive)
- VFD control for rake speed (variable speed drive)
- Level Switch to Prevent MASH Tank Over Boil
- ***Integrated CIP & Wort Pipelines for better cleaning***
- Digital display temperature of hot water & wort back of Heat Exchanger
- Alarm buzzer function

### ➤ Cellar Control

- Digital display temperature in cellar tanks
- Temperature auto control in CWT, GWT
- Alarm buzzer function



### ➤ Delivery time:

- Production time: 50 working days
- Shipping time: 30-32 days
- Shipping date: 2019.05
- Arrival date: 2019.06

### ➤ Case Showing

- Brewdog Outpost

### ➤ Location

- Dublin, Ireland



IFM Level Switch



Use for over-boiling and Dry-Heating protection

Water Mixing Station



Use for mixing of hot and cold water

Brewhouse Pipeline



Use for wort transfer

IFM Flow Switch



Use for protecting pump from idling

Plate Heating Exchanger



Use for wort cooling from Brewhouse to FV

Water Supply Pump



Use for HLT&CLT water supply

Integrated Cabinet



For brewhouse and cellar vessels control

Brewhouse Control Panel



All the functions could be controlled on the control panel  
[yolongbrewtech.com](http://yolongbrewtech.com)

## 5HL 2 Vessels Electric Brewing System

Area: 8m<sup>2</sup>  
5500mm\*1500mm\*2300mm

### ➤ Brewhouse Control

- Semi-auto control system for both of BH
- MT ,k/WT temperature auto control
- Wort Temperature after wort PHX auto control
- Manually water mixing station for setting temperature and measuring filling volume for M/KT water filling & sparge water filling
- Digital display temperature on Control panel
- Tank lights ON/OFF
- Mash pump, wort pump, HWT pump ON/OFF
- VFD control for all pumps (variable speed drive)
- VFD control for rake speed (variable speed drive)
- Level Switch to Prevent MASH Tank Over Boil
- ***Integrated CIP & Wort Pipelines for better cleaning***
- Digital display temperature of hot water & wort back of Heat Exchanger
- Alarm buzzer function

### ➤ Delivery time:

- Production time: 50 working days
- Shipping time: 30-32 days
- Shipping date: 2018.12
- Arrival date: 2019.02

### ➤ Production Quantity: 2

### ➤ Buyer Location:UK, Singapore

### ➤ Case Showing

- Brewdog Outpost

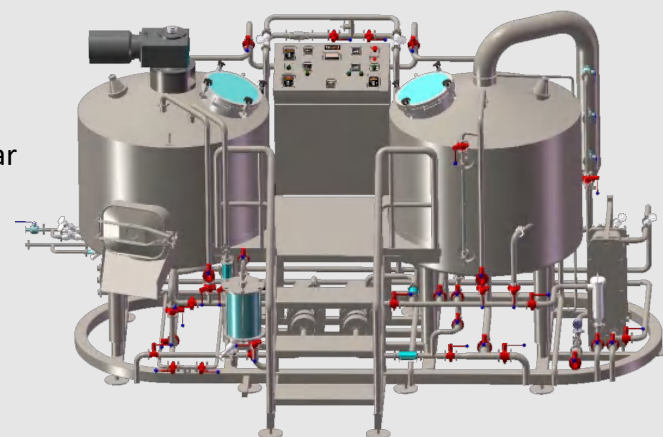
### ➤ Location

- Manchester, UK



### ➤ Cellar Control

- Digital display temperature in cellar tanks
- Temperature auto control in CWT, GWT
- Alarm buzzer function



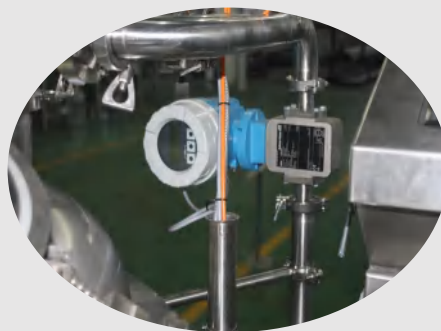


Rake system



Use for Auto screw conveyor  
for Brewhouse malt

E+H Flow Meter



Used for metering of Brewhouse  
influent

Grist Hydrator



Use for thorough mixing of  
grains

Electric Heating Elements



Explosion-proof elec  
heating & IP66 water-  
proof class

Centrifugal Pump



VFD control for all pumps in  
Brewhouse

IFM Level Switch



Use for over-boiling and  
Dry-Heating protection

Plate Heating Exchanger



Use for wort cooling from  
Brewhouse to FV

Brewhouse Control Panel



All the functions could be  
controlled  
on the control panel  
[yolongbrewtech.com](http://yolongbrewtech.com)

## 5HL 2 Vessels Electric Brewing System

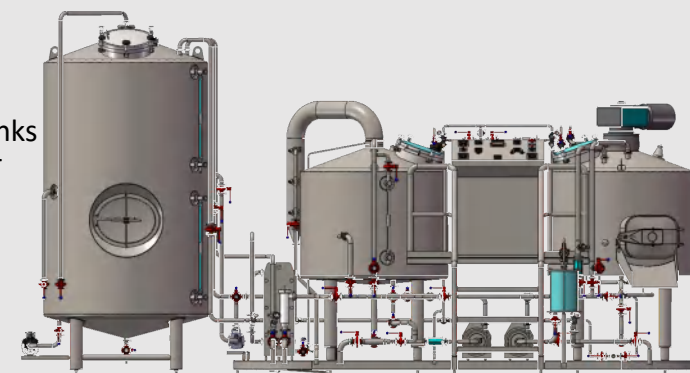
Area: 5m<sup>2</sup>  
3500mm\*1500mm\*2300mm

### ➤ Brewhouse Control

- HLT temperature auto control
- HLT,MT Anti Dry-combustion Auto Protection
- **Automatic Hot Water Plumbing**
- MT ,k/WT temperature auto control
- Wort Temperature after wort PHX auto control
- Digital display temperature on Control panel
- Tank lights ON/OFF
- Mash pump, wort pump, HWT pump ON/OFF
- VFD control for all pumps (variable speed drive)
- VFD control for rake speed (variable speed drive)
- Level Switch to Prevent MASH Tank Over Boil
- Digital display temperature of hot water & wort back of Heat Exchanger
- Alarm buzzer function

### ➤ Cellar Control

- Digital display temperature in cellar tanks
- Temperature auto control in CWT,GWT
- Alarm buzzer function



### ➤ Delivery time:

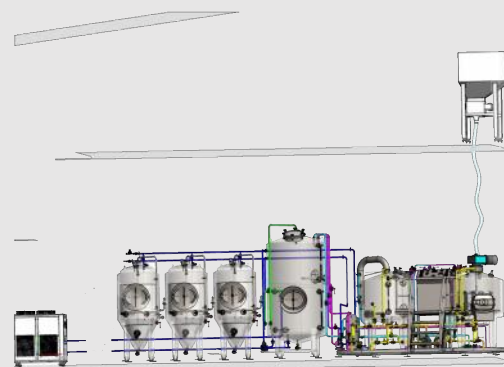
- Production time: 55 working days
- Shipping time: 30-32 days
- Shipping date: 2022.05
- Arrival date: 2022.05

### ➤ Case Showing

- Brasserie du Singe Brewery

### ➤ Location

- Switzerland



### ➤ Production Quantity: 5

### ➤ Buyer Location: UK, Singapore, Switzerland, USA, Japan

Rake system



Combined for Raking & Ploughing

Engrave logo



Customized client brand

Low level sensor



Use for protect pump dry-running

Centrifugal Pump



VFD control for all pumps in Brewhouse

Top Glycol Pipe



Use for easy install

Electric Heating tube



Use for boiling

Plate Heating Exchanger



Use for wort cooling from Brewhouse to FV

Brewhouse Control Panel



All the functions could be controlled on the control panel  
yolongbrewtech.com



## 4HL 3 Vessels Steam Brewing System

### ➤ Brewhouse Control

- HLT , CWT temperature auto control and display
- Mash Kettle, Lauter Tun temperature auto control and display
- **Wort Temperature after wort PHX auto control and display**
- Automatic water mixing station for setting temperature and measuring filling volume for M/KT water filling & sparge water filling
- Water Auto Flow and Drain
- Mash Auto Flow and Drain
- VFD control for all pumps (variable speed drive)
- VFD control for mash mixer speed (variable speed drive)
- VFD control for raking system speed (variable speed drive)
- Pumps Idling protection
- Level Switch to Prevent mash kettle Over Boil
- Alarm buzzer function
- Tanks Light on/off
- **Skid Design**

### ➤ Delivery time:

- Production time: 55 working days
- Shipping time: 30-32 days
- Shipping date: 2019.04
- Arrival date: 2019.11

### ➤ Case Showing

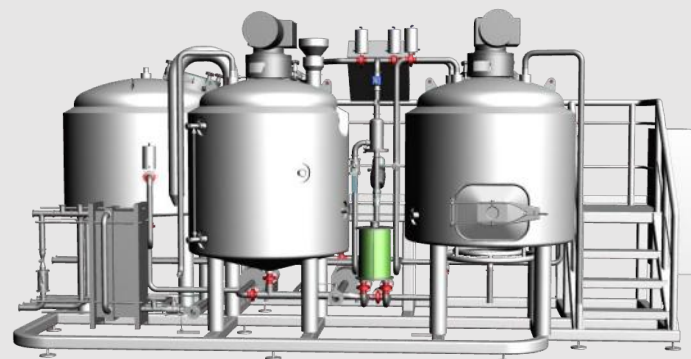
- Cloudwater Brew Co.

### ➤ Location

- UK



Area: 10m<sup>2</sup>  
4500mm\*2200mm\*2100mm



Mash Paddle



Use for mixing grain and water in mashing process

E+H Flowmeter/Burket Valve



Auto-mixing of hot and cold water to target temperature and Volume

Low level sensor



Use for protect pump dry-running

Integrated CIP Stations



All integrated CIP pipelines for high sanitary

Centrifugal Pump



VFD control for all pumps in Brewhouse

Plate Heating Exchanger



Use for rapid cooling for knock-out

Immergence Button



System shutdown during Immergence

PLC+HMI



PLC+Touch Screen with Auto Valve

## 3.5BBL 2 Vessels Dricet-Fire Brewing System

### ➤ Brewhouse Control

- Semi-auto control system for both of BH
- MT ,k/WT temperature auto control
- Wort Temperature after wort PHX auto control
- Manually water mixing station for setting temperature and measuring filling volume for M/KT water filling & sparge water filling
- Digital display temperature on Control panel
- Tank lights ON/OFF
- Mash pump, wort pump, HWT pump ON/OFF
- VFD control for all pumps (variable speed drive)
- VFD control for rake speed (variable speed drive)
- **Level Switch to Prevent MASH Tank Over Boil**
- **Integrated CIP & Wort Pipelines for better cleaning**
- Digital display temperature of hot water & wort back of Heat Exchanger
- Alarm buzzer function

### ➤ Delivery time:

- Production time: 50 working days
- Shipping time: 30-35 days
- Shipping date: 2022.03
- Arrival date: 2022.04

### ➤ Case Showing

- Validation Ale Brewing Co.

### ➤ Location

- USA



Area: 5m<sup>2</sup>  
3500mm\*1500mm\*2600mm





BH Cabinet



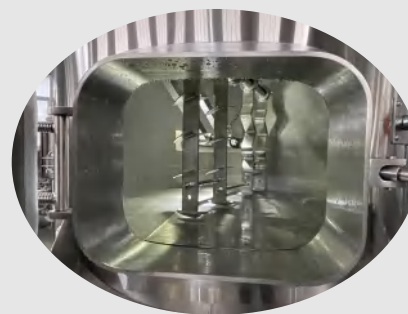
Manual BH cabinet for little brewpub

Gas heating option



Gas heating with Midco Burner

Rake Assembly



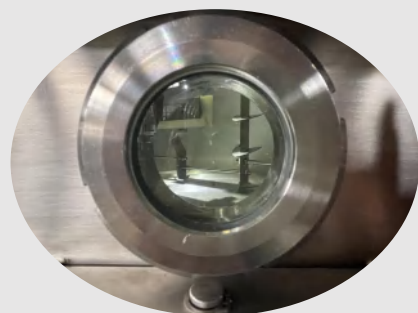
Mini-Type rake system for brewpub brewhouse

Rake emergency stop



Rake EMERGENCY STOP for protection

Grain hatch galss



For better mashing observation

Anti-Over Boil Protection



Foaming sensor for control the burner working condition

Plate Heating Exchanger



Use for Two-stage wort cooling from Brewhouse to FV

Stacked Fermenter



Stacked tank for tap serving

## 2BBL 2 Vessels Electric Brewing System

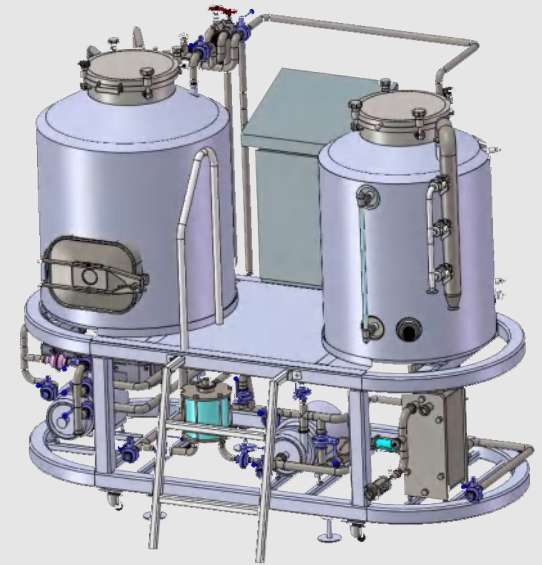
Area: 3m<sup>2</sup>  
2200mm\*1350mm\*2300mm

### ➤ Brewhouse Control

- HLT temperature auto control
- HLT,MT Anti Dry-combustion Auto Protection
- Automatic Hot Water Plumbing
- MT ,k/WT temperature auto control
- Wort Temperature after wort PHX auto control
- Digital display temperature on Control panel
- Tank lights ON/OFF
- Mash pump, wort pump, HWT pump ON/OFF
- VFD control for all pumps (variable speed drive)
- VFD control for rake speed (variable speed drive)
- **Level Switch to Prevent MASH Tank Over Boil**
- Digital display temperature of hot water & wort back of Heat Exchanger
- Alarm buzzer function

### ➤ Cellar Control

- Digital display temperature in cellar tanks
- Temperature auto control in CWT,GWT
- Alarm buzzer function



### ➤ Delivery time:

- Production time: 50 working days
- Shipping time: 30-32 days
- Shipping date: 2020.06
- Arrival date: 2020.08

### ➤ Case Showing

- Linnéstadens Bryggeri AB

### ➤ Location

- Gothenburg, Sweden



Rake System



Combined for Raking & Ploughing

Water mixing station



Use for water mixing

Sight glass manway



Use for checking the boiling

Centrifugal Pump



VFD control for all pumps in Brewhouse

Electric Heating tube



Use for boiling the wort

Dry hop



Use for dry hopping

Plate Heating Exchanger



Use for wort cooling from Brewhouse to FV

Brewhouse control panel



Use for brewhouse control



## 1BBL 2 Vessels Electric Brewing System

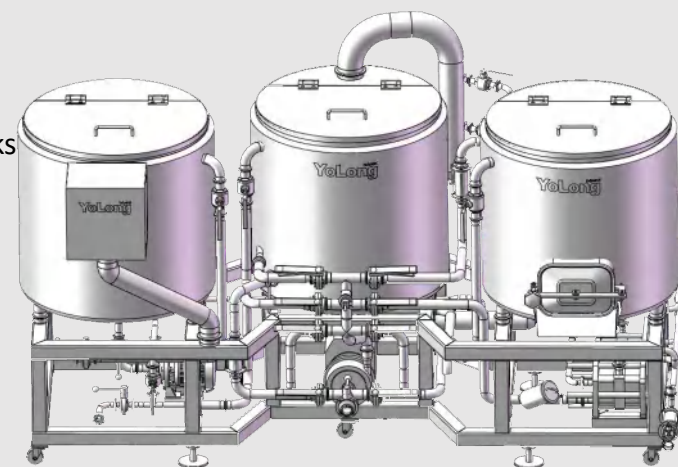
Area: 4m<sup>2</sup>  
3500mm\*1200mm\*2000mm

### ➤ Brewhouse Control

- HLT temperature auto control
- HLT, MT Anti Dry-combustion Auto Protection
- MMLT, KTWP temperature auto control
- Wort Temperature after wort PHX auto control
- Digital display temperature on Control panel
- Tank lights ON/OFF
- Mash pump, wort pump, HWT pump ON/OFF
- **VFD control for all pumps (variable speed drive)**
- **Level Switch to Prevent MASH Tank Over Boil**
- Alarm buzzer function

### ➤ Cellar Control

- Digital display temperature in cellar tanks
- Temperature auto control in CWT,GWT
- Alarm buzzer function



### ➤ Delivery time:

- Production time: 45 working days
- Shipping time: 20-25 days
- Shipping date: 2020.07
- Arrival date: 2020.08

### ➤ Case Showing

- Bootleg Brothers Co.

### ➤ Location

- Thailand



### ➤ Production Quantity: 3

### ➤ Buyer Location: Thailand, UK, Belgium

Electric Heating Elements



Heating elements ON/OFF

Brewhouse Skid



Skid design, convenient for the assemble and moving

Plate Heat Exchanger



Two stages PHE, one is for tap water, another is for glycol water

CIP and Sparge Device



CIP and circular filtering function

IFM Temperature Sensor



Use for automatic temperature detection

Manual Butterfly Valves



Material manual flow

Fermenters Control Panel



All fermenters and glycol tanks temp display & control

Brewhouse control panel



Use for brewhouse control

## 3HL 1 Vessel Kombucha Brewing System

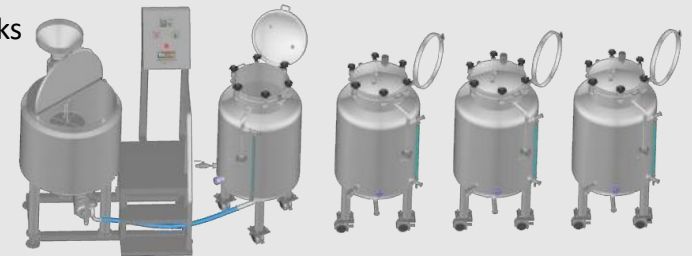
### ➤ Brewhouse Control

- Temperature auto control
- Anti Dry-heating Auto Protection
- Tank lights ON/OFF
- ***Sugar auto-dissolve***
- Pump ON/OFF
- VFD control for kombucha pump
- ***Level Switch to Prevent Over Boil***
- Digital display temperature of infusion hot tea
- Alarm buzzer function

### ➤ Cellar Control

- Digital display temperature in cellar tanks
- Temperature auto control in first and second fermentation
- ***Scoby management***
- ***Carbonation***
- Flavor
- Alarm buzzer function

Area: 4m<sup>2</sup>  
2900mm\*1350mm\*2300mm



### ➤ Delivery time:

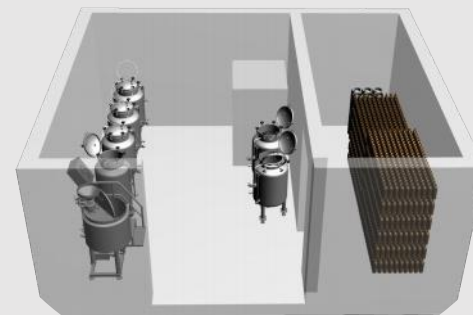
- Production time: 55 working days
- Shipping time: 25-30 days
- Shipping date: 2021.09
- Arrival date: 2021.10

### ➤ Case Showing

- Tahiti kombucha Co.

### ➤ Location

- Polynesia



### ➤ Production Quantity: 3

### ➤ Buyer Location: Polynesia, Singapore, USA



Tea cage



Use for hold the tea

Sugar Mixing Station



Use for automatic dissolve the sugar

Temp and Pressure display



Monitor the temp and pressure

Kombucha bottle filler



Use for fill kombucha to the bottle

Kombucha filter



Use for filter the kombucha

Tea Kettle



Use for tea infusion

Fermenter



Use for scoby in the first fermentation

Control System



Use for kombucha tea infusion

## Cellar Tank

### ➤ Specifications

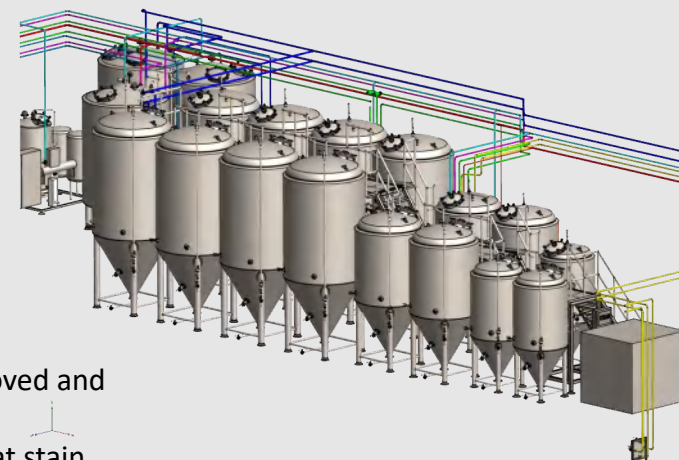
- Capacity available from 1/2 HL to 500HL
- SS 304 construction
- Top dished head with pressure vacuum relief valve
- Top manway or side shadowless manhole
- Dry Hopping port with cap
- Sanitary rotary spray ball
- PU foam insulated
- Cooling jacket on cylinder and cone bottom
- The optional jacket for hot water heating in cold area to ensure good fermentation
- Side CIP arm assembly with bung valve and pressure gauge
- Sanitary thermowell
- Sample Valves
- Racking arm (For Fermenter)
- Cabnation stone for Co2 (For BBT)
- 60 degree to 90 degree cone bottom
- Bottom discharge
- Four legs adjustable feet, optional for anti-seismic
- Available pressure certificates of PED for 2014/68/EU, AS1210 etc

➤ **Total Production Quantity:** 3900+ tanks

➤ **Beer Production/year:** 2,360,000HL

### ➤ Additional Details

- 75 mm PU-foam insulation
- Material, 304 stainless steel
- Sheet thickness, 3 mm
- Cladding thickness, 2 mm
- Inside finish, 2B
- Outside finish, #4
- Inside welds, grounded, removed and polished to #4
- Outside welds, clean with heat stain removed





## YOLONG INDUSTRIAL CO., LIMITED

[yolongbrewtech.com](http://yolongbrewtech.com) / [Info@yolongbrewtech.com](mailto:Info@yolongbrewtech.com)

CN: +86 (574) 6572-3572 USA: +1 (929) 238-1869

No.15, Yinghua Road, Baiyanshan East Industrial Park, Xiangshan County, Ningbo City, China.

Follow us on



@Yolongindustrial

