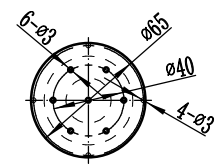


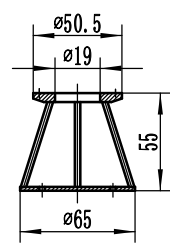
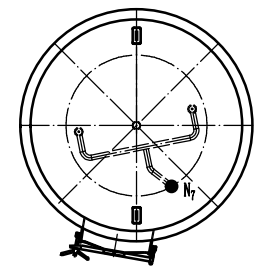
Sparge

4:1

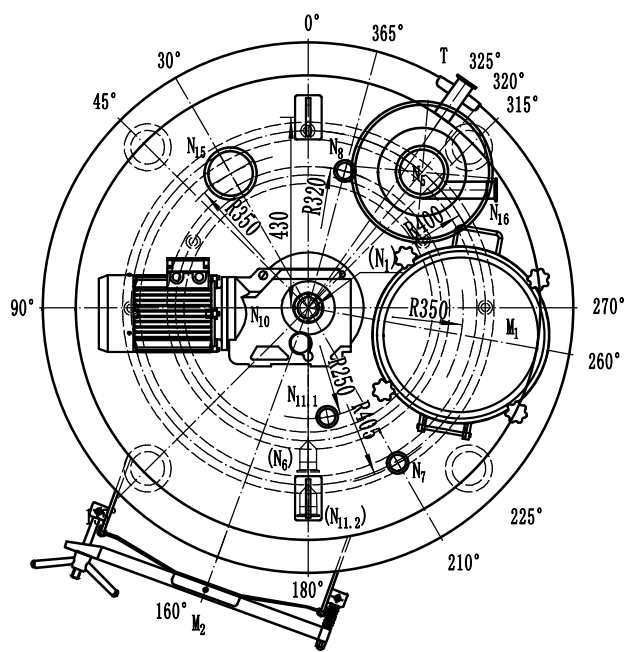


Sparge & Spray Ball

1:2



Technical parameter		
	Inner shell	Outer shell
Material	SUS304	SUS304
Thickness	3mm	2mm
Heating area m <sup>2</sup>	0	
Insulation	Mineral wool	
Total volume	680L	
Working volume	500L	

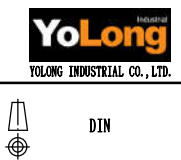


Specification

Symbol	Spec	Connecting Style	Usage
M <sub>1</sub>	ø350	Welding	Glass manway
M <sub>2</sub>	535x435	Welding	Side Manway
N <sub>1</sub>	DN50	Tri-clamp	Drain
N <sub>5</sub>	DN100	Tri-clamp	Hydrator inlet
N <sub>6</sub>	DN40	Tri-clamp	Wort outlet
N <sub>7</sub>	DN40	Tri-clamp	Wort recycle inlet
N <sub>8</sub>	DN40	Tri-clamp	Sparge
N <sub>10</sub>	/	/	Reducer (1.5Kw)
N <sub>11.1</sub>	DN40	Tri-clamp	Spray ball
N <sub>11.2</sub>	DN40	Tri-clamp	Flush nozzles
T	DN40	Tri-clamp	Thermowell
N <sub>15</sub>	DN100	Bevel seat	Tank light
N <sub>16</sub>	DN40	Tri-clamp	Water inlet

Mark	Revision Text	Places Partitioning	Rev. No.	Signature	Date	Mark	Revision Text	Places Partitioning	Rev. No.	Signature	Date
			1	all	V1.1	Jason Wang	2019.05.06				

THE INFORMATION CONTAINED IN THIS DRAWING IS THE SOLE PROPERTY OF <YOLONG INDUSTRIAL CO., LTD.>. ANY REPRODUCTION IN PART OR AS A WHOLE WITHOUT THE WRITTEN PERMISSION OF <YOLONG INDUSTRIAL CO., LTD.> IS PROHIBITED.



客户图标	YI-03-0213A19-A
500L ML	1:12
图纸编号	500L ML-D1050
第 页 / 共 页	