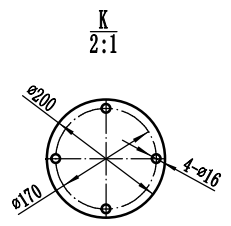
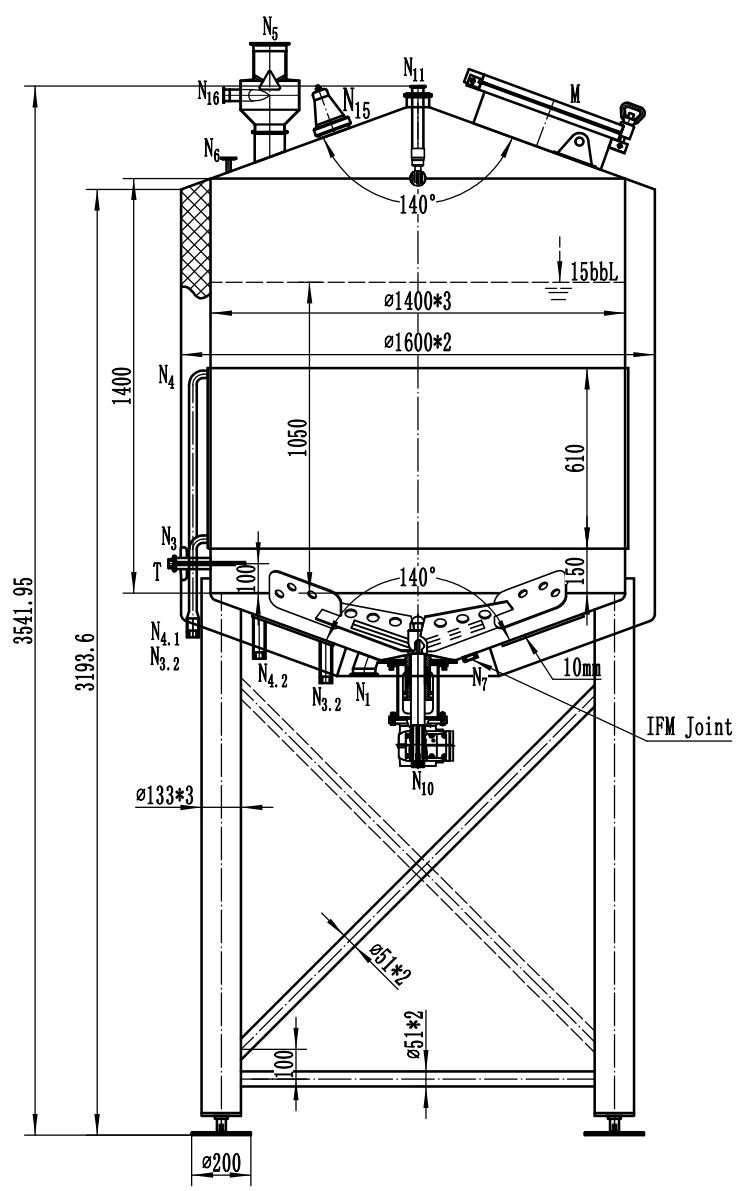
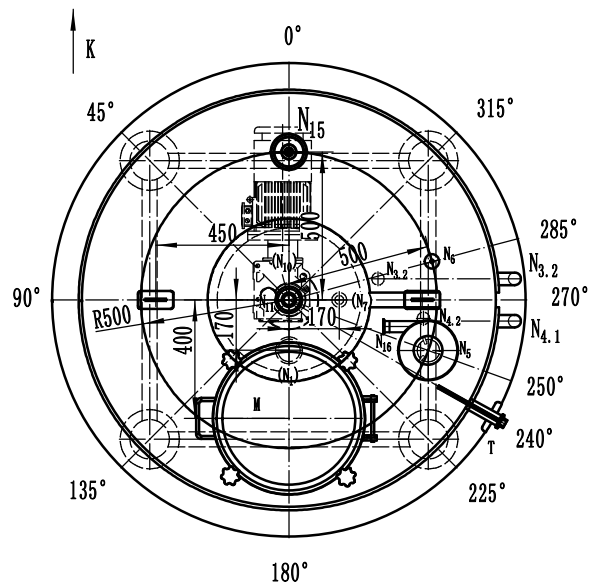


THE INFORMATION CONTAINED IN THIS DRAWING IS THE SOLE PROPERTY OF  
 YOLONG INDUSTRIAL CO., LTD. > ANY REPRODUCTION IN PART OR AS A WHOLE  
 WITHOUT THE WRITTEN PERMISSION OF <INSERT COMPANY NAME HERE> IS PROHIBITED.



Technical parameter		
	Inner shell	Outer shell
Material	316L	SUS304
Thickness	3mm	2mm
Heating area m <sup>2</sup>	3.5	
Insulation	Mineral wool	
Total volume	19.8BBL	
Working volume	15BBL	
Net weight	750 Kg	



Specification			
Symbol	Spec	Connecting Style	Usage
M	Ø450	Welding	Glass manway
N <sub>1</sub>	2.5"	Tri-clamp	Outlet
N <sub>3</sub>	0.75"	NPT	Condensation outlet
N <sub>4</sub>	1"	NPT	Steam inlet
N <sub>5</sub>	4"	Tri-clamp	Hydrator
N <sub>6</sub>	0.5"	Tri-clamp	CO <sub>2</sub> inlet
N <sub>7</sub>	1"	Thread	Level sensor
N <sub>10</sub>	Ø260	Welding	Reducer (2.2KW)
N <sub>11</sub>	3"-1.5"	Tri-clamp	Spray ball
N <sub>15</sub>	4"	Bevel seat	Tank light
N <sub>16</sub>	1.5"	Tri-clamp	Water inlet
T	1.5"-0.5"	Tri-clamp/NPT	Thermowell

Project No.			
Drawing No.			
Version No.	V1.2		
Customer Confirmation			
Designer	jason wang	Date	2018.11.22
Draft man		Date	
Proofreading		Date	
Reviewer		Date	

15BBL MASH-D1400		YI-04-1106A17			
		Drawing Mark	Quantity	Weight	Scale
SUS304					1:18
		Total	Page	page	
YoLong YOLONG INDUSTRIAL CO., LTD.					