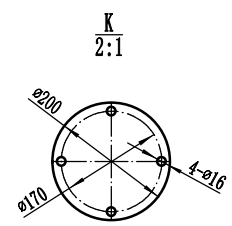
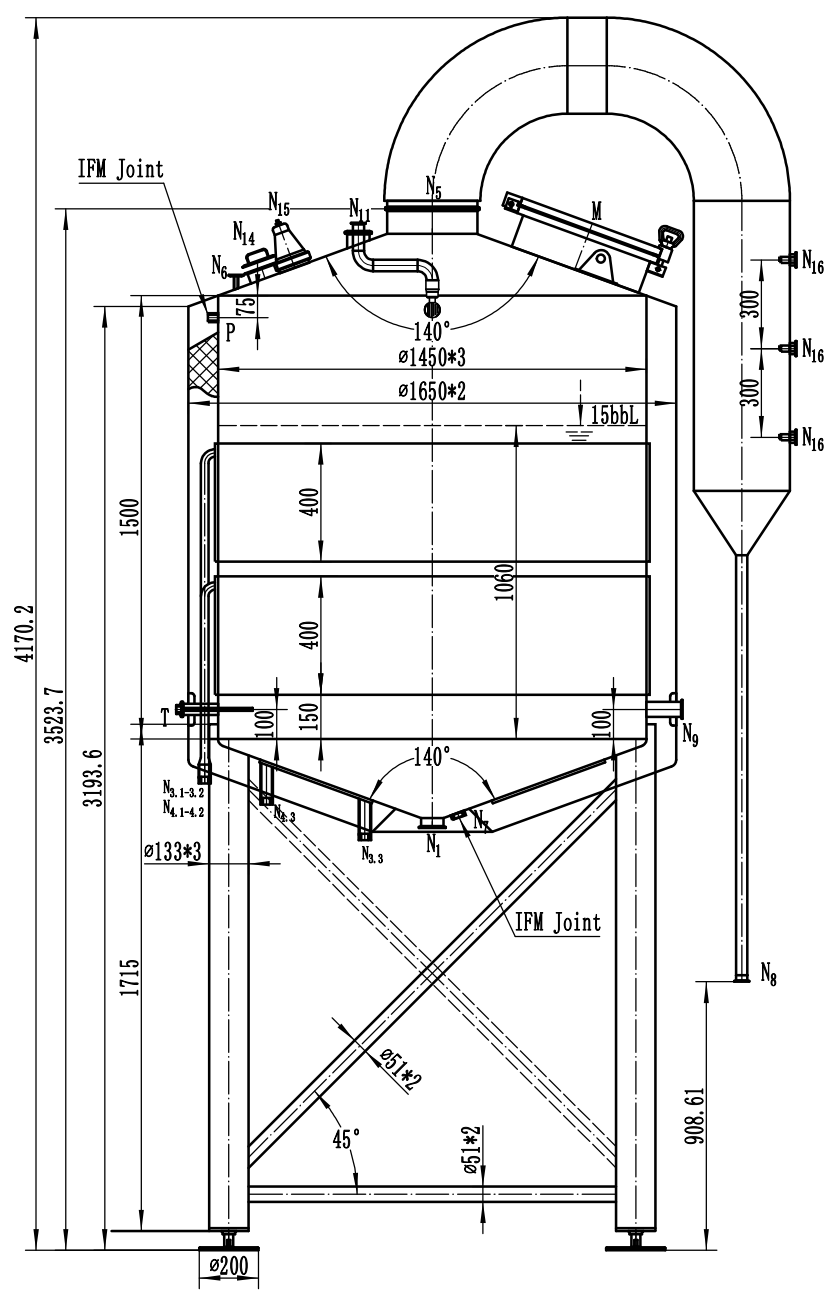
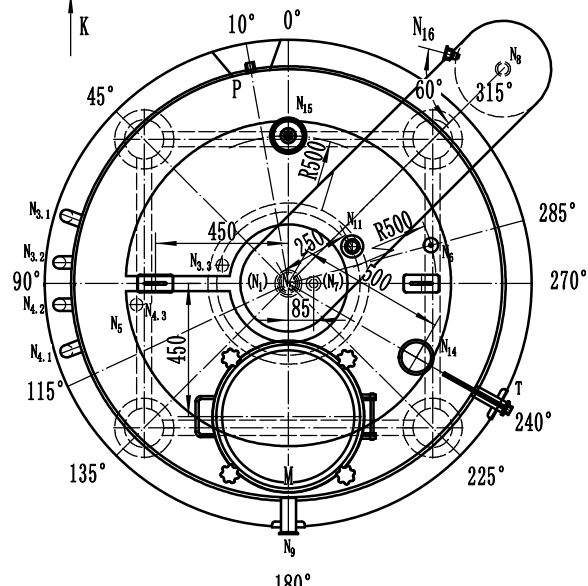


THE INFORMATION CONTAINED IN THIS DRAWING IS THE SOLE PROPERTY OF  
 YOLONG INDUSTRIAL CO., LTD. > ANY REPRODUCTION IN PART OR AS A WHOLE  
 WITHOUT THE WRITTEN PERMISSION OF <INSERT COMPANY NAME HERE> IS PROHIBITED.



Technical parameter		
	Inner shell	Outer shell
Material	316L	SUS304
Thickness	3mm	2mm
Heating area m <sup>2</sup>	4	
Insulation	Mineral wool	
Total volume	22.5BBL	
Working volume	15BBL	
Net weight	700 Kg	



Specification			
Symbol	Spec	Connecting Style	Usage
M	ø450	Welding	Glass manway
N <sub>1</sub>	3"	Tri-clamp	Outlet
N <sub>3</sub>	0.75"	NPT	Condensation outlet
N <sub>4</sub>	1"	NPT	Steam inlet
N <sub>5</sub>	12"	Tri-clamp	Stacker
N <sub>6</sub>	0.5"	Tri-clamp	CO <sub>2</sub> inlet
N <sub>7</sub>	1"	Thread	Level sensor
N <sub>8</sub>	1.5"	Tri-clamp	Water outlet
N <sub>9</sub>	2"	Tri-clamp	Wort inlet
N <sub>11</sub>	3"-1.5"	Tri-clamp	Spray ball
N <sub>14</sub>	4"	Tri-clamp	Hops adding hole
N <sub>15</sub>	4"	Bevel seat	Tank light
N <sub>16</sub>	1"	Tri-clamp	Water inlet
T	1.5"-0.5"	Tri-clamp/NPT	Thermowell
P	0.5"	G	point level port

Project No.	
Drawing No.	
Version No.	V1.2
Customer Confirmation	
Designer	jason wang
Date	2018.11.22
Draft man	
Date	
Proofreading	
Date	
Reviewer	
Date	

15BBL KETTLE-D1450

SUS304

YI-04-1106A17			
Drawing Mark	Quantity	Weight	Scale
			1:18
Total	Page	page	
YOLong YOLONG INDUSTRIAL CO., LTD.			